



WATERCARE

PARTS DIVISION



COMPONENT PARTS FOR VENDING, WATER,
SOFT DRINKS AND COFFEE INDUSTRIES.

CATALOGUE V5

INTRODUCTION

WATER TREATMENT & SPARES FOR DRINKS DISPENSERS

As well as being the UK's leading independent manufacturer and supplier of water filters, softeners and RO systems, our growing spares division provides everything to install, service and maintain your drinks equipment.

Established in 1995, European WaterCare is a British manufacturing success story. As well as our head office, located within 30 miles of Central London, we now operate successful affiliate businesses in Ireland, Denmark and South Africa.

Optimistic about the future, our determination as a team to always provide the best customer service is matched only by our strength of brand, quality of products and our goal of providing eco-friendly, value for money solutions.

WaterCare are members of:

The Speciality Coffee Association, The Beverage Service Association, The Foodservice Equipment Association, The Catering Equipment Distributors Association, The Water Dispenser & Hydration Association, as well as ENSE.



CONTENTS

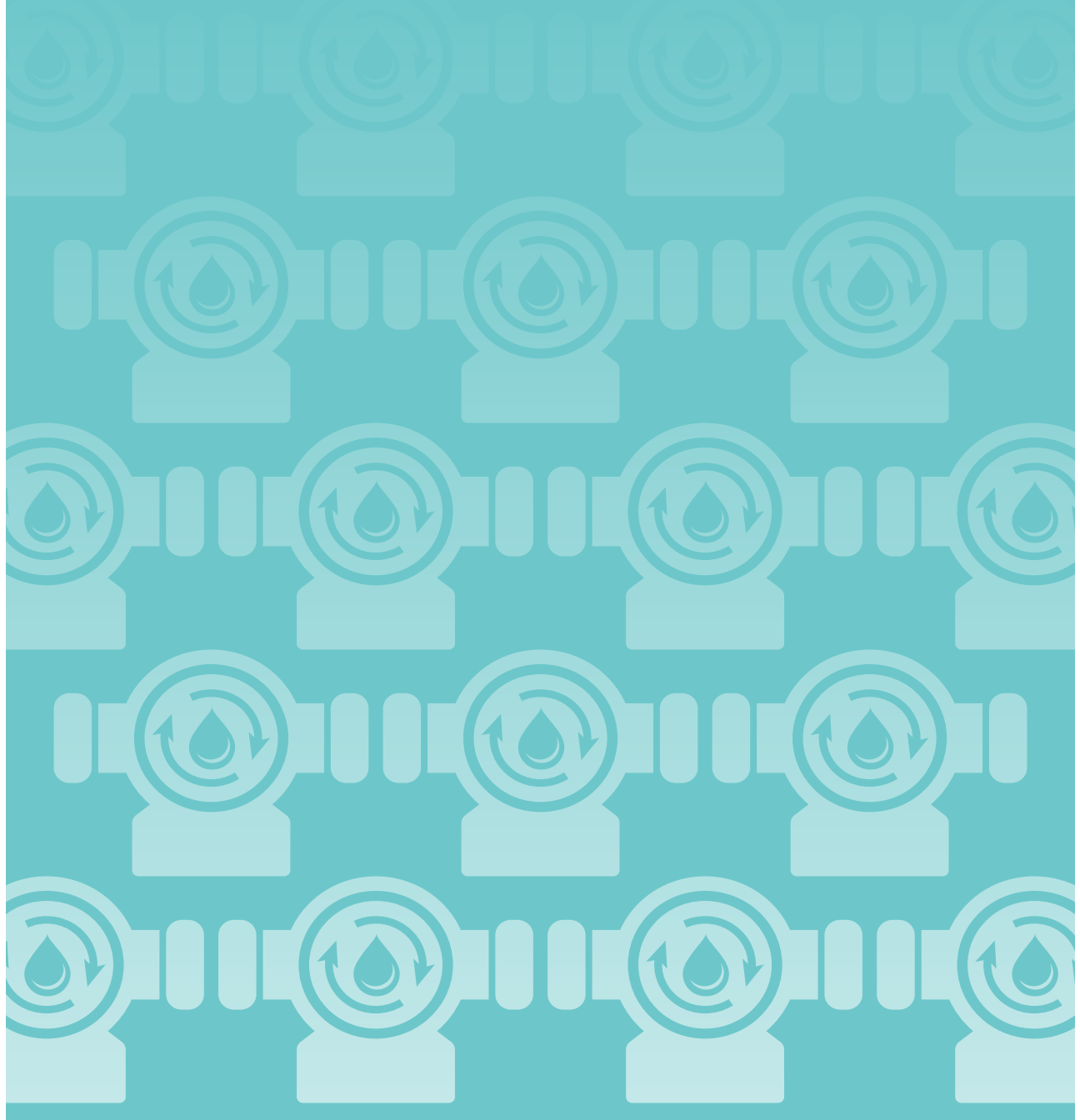
PUMPS	04-06
PUMPS/JERRY CANS/FITTINGS	
VALVES	07-11
NON-RETURN VALVES, WASHING MACHINE VALVES, PRV, SOLENOID VALVES, WATER BLOCK, INSTALLATION RAILS	
FITTINGS	12-18
PLASTIC, BRASS, STAINLESS STEEL, METAL	
TUBING / HOSES	19-21
HOSES/SILICONE/PVC/HYDRAVEND/MDPE/BRAIDED PVC/INSULTUBE	
O RINGS / WASHERS	22-23
WASHERS, O'RINGS	
SOFT DRINKS / BARGUN SPARES	24-30
424 PARTS, SPRINGS, BUTTONS, MISC, PLASTIC, O'RINGS, CONNECTOR/TOOLS, BUTTON CAPS, VALVES	
ELECTRICAL	31-32
POWER LEAD	
HYGIENE	33-37
TABLETS, POWDER, LIQUID, CLEANING MISC	
WATER FILTERS	38-51
WATERCARE, BRITA, BWT, 3M, EVERPURE	
COFFEE MACHINE PARTS AND ACCESSORIES	52-55
VALVES, GRINDER BLADES, PRESSURE SWITCHES, ACCESSORIES	
MISC	56-59
CABLE TIE, STAINLESS STEEL CLAMPS, OETIKER, MISC	



PUMPS

FLUID TRANSFER PUMPS FOR WATER, DRINKS DISPENSERS
AND COFFEE MACHINES.

PUMPS / JERRY CANS / FITTINGS



PUMPS



Description	Part No
JCAN 20L WITH BLACK LID	JERRYCAN20L

20 Ltr Jerry can, ideal to be used with Flojet Bottled water pump



Description	Part No
FLOJET BOTTLED WATER PUMP WITH UNIVERSAL PLUG	FLOJETBOTTLEDWATERPUMP-UNI
FLOJET DUAL WAND FOR USE WITH FLOJET BOTTLE WATER PUMP RANGE	FLOJETDUALWAND

Universal compact bottled water pump, Float switch for auto shut off, Built in non-return valve to prevent back flow, Positive displacement pump, Universal plug UK/European



Description	Part No
FLOJET SYRUP PUMP-PRODUCT OUT 3/8 BARB, GAS IN 1/4 BARB	FLOJETSYRUPPUMP
FLOJET SYRUP PUMP-PRODUCT OUT 3/8 STRAIGHT STEM, GAS IN 1/4 BARB	FLOJETSYRUPPUMP-3/8STEM

Flojet CO2 Syrup pump



Description	Part No
SHURFLO SYRUP PUMP, GAS OPERATED 3/8" BARB PLASTIC ELBOW, 1/4" BARB S/STEEL ELBOW	PUMP-SHURFLO 166-296-28

CO2 powered syrup pump of superior performance and reliability, Designed for dispensing BIB syrups



Description	Part No
200L/H BRASS ROTARY VANE PUMP, BALANCED BYPASS + FILTER	PUMP-200L/HBRASSRVP
300L/H BRASS ROTARY VANE PUMP, BALANCED BYPASS + FILTER	PUMP-300L/HBRASSRVP
300L/H STAINLESS STEEL ROTARY VANE PUMP	PUMP-300L/HSSTEELRVP

A full range of rotary vane pumps, suitable for carbonation, recirculation, water filtration and espresso coffee machines, Available in brass and stainless steel



Description	Part No
BOXED BOOSTER PUMP SHURFLO	PUMP-BOXEDBOOSTER

A boxed diaphragm pump fitted with pressure switch, Complete with 3/8" push fit connectors and 13A lead

PUMPS

SHURflo



Description	Part No
SHURFLO FITTING GAS PUMP LIQUID 3/8(10MM) JG STEM 3/8" stem shurflo pump fitting	PUMP-FITTING84-038-03



Description	Part No
GP20/12 PUMP 230V 1PH 50HZ GP series electric pump, Port details: 15mm, 3/8" NPT, 3/8" BSPM	PUMP-GP20/12



Description	Part No
GPR 10/15 PUMP, 230V 1HP 50/60HZ 1/2" STEM	PUMP-GPR10/15



Description	Part No
G6012021 G60 3/8" WATER BOOST PUMP (SMALL)	PUMP-G60



Description	Part No
HPR6/11 PUMP 230-1-50 3/8 CARTRIDGE 1.0M CABLE IEC PLUG Magnetically coupled regenerative pump, Designed for continuous recirculation of carbonated water, aggressive chemicals and chilled water in high pressure systems. Operating at an optimum flow rate of 3 ltrs/min.	PUMP-HPR6/11



Description	Part No
HBM6/8 230-1-50 CARB PUMP 3/8" PUSH FIT	PUMP-083933



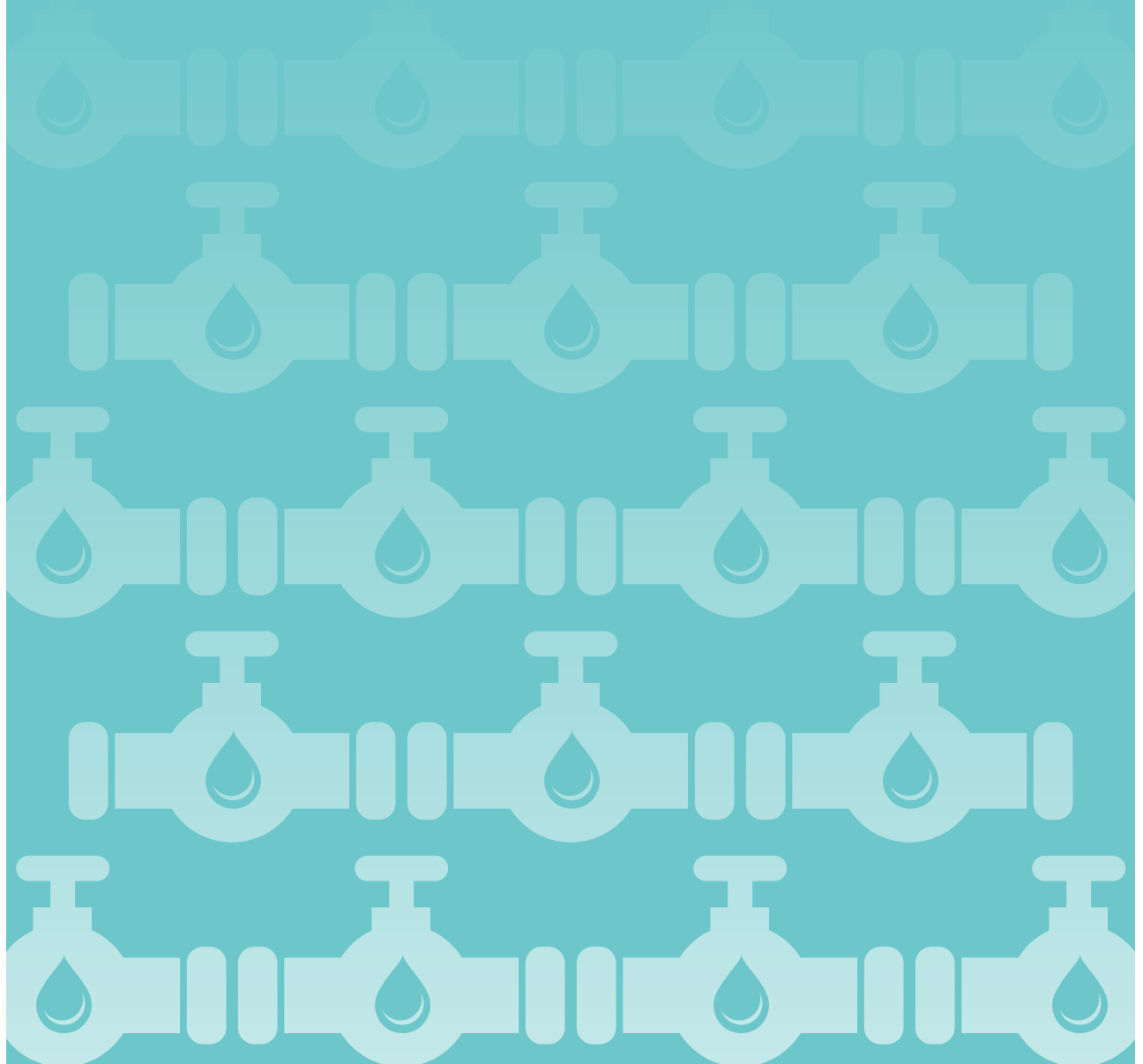
Description	Part No
VIBRATION PUMP PHOENIX 50N 230V, 53W, 50HZ	PUMP-VIBRATION 230V-53W-50HZ
ULKA PUMP EP8GW FLAME PROOF COIL 230/240V 50HZ 26W FITTINGS 1/8 - 6MM, MAX PRESSURE 15BAR	PUMP-VIBRATION EP8GW230V26W
ULKA PUMP EX4 230/240V 50HZ 48W	PUMP-VIBRATION EX4230V48W
VIBRATORY PUMP EX5, 15 BAR FITTINGS 1/8-6MM MAX TEMP 20° CONNECTOR TERMINAL 6.3 X 0.8MM NSF APPROVED	PUMP-VIBRATION EX548W230V

[Compact ULKA pumps capable of high pressures up to 16 Bar, Compact body and quiet operation makes it suitable for various applications, including syrup pump for vending and post mix and espresso coffee machines.](#)

VALVES

FLUID TRANSFER VALVES AND SOLENOIDS FOR DRINKS DISPENSERS
AND COFFEE MACHINES

**NON-RETURN VALVES / WASHING MACHINE VALVES / PRV
SOLENOID VALVES / WATER BLOCK / INSTALLATION RAILS**



VALVES

NON-RETURN VALVES



Description

15MM COMPRESSION ISOLATOR VALVE (BLACK HANDLE) WITH DOUBLE CHECK VALVE

Part No

DCVSHUTOFF15MM

Comprehensive range of WRAS approved non-return valves available from stock, Single and double available.



Description

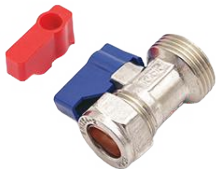
15MM DOUBLE CHECK VALVE-WRAS APPROVED

Part No

VEMCV155-WRAS

Comprehensive range of WRAS approved non-return valves available from stock, Single and double available.

WASHING MACHINE VALVES

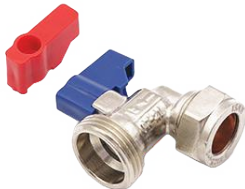


Description

WASHING MACHINE STRAIGHT VALVE, WRAS APPROVED 15MM COMP X 3/4" CHROME PLATED BRASS

Part No

WMC-STRAIGHT



Description

WASHING MACHINE ANGLE VALVE, WRAS APPROVED 15MM COMP X 3/4" CHROME PLATED BRASS

Part No

WMC-ANGLE



Description

WASHING MACHINE TEE VALVE, WRAS APPROVED 15MM COMP X 15MM COMP X 3/4" CHROME PLATED BRASS

Part No

WMC-TEE

VALVES

PRV



Description	Part No
PLASTIC PRV ADJUSTABLE SUPPLIED SET AT 3 BAR, 1/4" PUSHFIT WITH BRACKET	PRV-ADJUSTABLE-1/4PF



Description	Part No
INLINE WATER PRESSURE REGULATOR 50PSI	PRO1754300C
INLINE WATER PRESSURE REGULATOR 80PSI	PRO1754330C
SINGLE IN-LINE WATER PRESSURE REGULATOR 50PSI (3.4 BAR)MAX. 10-13MM(3/8"-1/2")BARB STRAIGHT IN&OUTLET	PRV01754302C
1/2" JG FITTING FOR FLOJET PRESSURE REGULATOR	PRFITTING-21000230B
3/8" JG FITTING FOR G56,K56,G81,G60 SERIES PUMPS AND PR 01752 & 01754 PRESSURE REGS	PRFITTING-21000229B

Inline fixed water pressure regulator
Available in 15, 30, 50, 65 and 80 PSI, Please contact sales for details.



Description	Part No
BRASS 1/2" FEMALE X 3/4" MALE PRV SET AT 2.8BAR-KIWA	PRV-1/2FX3/4M-2.8BAR
MINI BRASS 1/2" FEMALE X 3/4" MALE PRV SET AT 2.8 BAR WRAS APPROVED	PRV-1/2FX3/4M-WRAS

Range of Pressure Reducing Valves in brass + plated brass.
Set at 2.8 Bar but can be adjusted.



Honeywell

Description	Part No
HONEYWELL BRASS PRV 1/2" BSPF C/W GAUGE PORT (SUPPLIED SET AT 3BAR)	PRV-DO4-12A

Honeywell pressure reducing valve designed to protect appliances against excessive supply pressure. Must be installed in horizontal pipework. WRAS approved product.



Description	Part No
SLIMLINE 15MM COMPRESSION ADJUSTABLE PRV FACTORY SET TO 3 BAR	PRV-ADJ-15MM-SLIM

VALVES

SOLENOID VALVES - We offer a full range of mains water solenoid valves, if what you need is not listed please contact sales



Description

S18, 230V 3/8JG SOLENOID VALVE

[Mains water solenoid valve](#)

Part No

SOLENOID-MWS90826



Description

EKI VALVE 180° 24V 3/8" JG X 3/8" JG

[Mains water solenoid valve](#)

Part No

VALVE-90828EV



Description

EKI VALVE, S18, 12VOLT, 10B, SIL

[Mains water solenoid valve](#)

Part No

VALVE-EVS18-12V-10B-SIL



Description

MULLER 110V DISPENSE VALVE 40.008.

MULLER 24VDC DISPENSE VALVE 40.008.101

[Boiler solenoid valves](#)

Part No

VALVE-M55019

VALVE-M55027



Description

MEMBRANE FOR MULLER VALVES SERIES 40.008 & 46.008

[Replacement membrane for MULLER solenoid valves](#)

Part No

VALVEMEMBRANE-M07699



Description

DISPENSE/BOILER VALVE REPAIR KIT MULLER

[Repair kit for MULLER solenoid valves](#)

Part No

VALVEREPAIR-D48504

VALVES

WATER BLOCK



Description

WATER BLOCK SAFETY DEVICE

Part No

WB001

Leak prevention device

Water Block overflow safety device with 3/4" BSP threads, which is designed to prevent the flow of water greater than set by the adjustment pointer; preventing flooding and leak damage.



Description

WATERBLOCK EXTERNAL RESET DEVICE
3/4" BSPF X 3/4" BSPM

Part No

WB-RESETDEVICE

Water Block external reset device, This enables an easy reset without dismantling an installation For use with Water Block overflow safety device

INSTALLATION RAILS - Bespoke installation rails, if you do not see the version you require contact sales.



Description

WATER PRESSURE KIT(PRV,DCV) 2.8 BAR, 15MM PF INLET X 1/2" PF OUTLET

Part No

PRVDCV15-2.8BAR

PRV, DCV KIT WITH BLACK HANDLE 15MM COPPER INLET X 1/2" PUSHFIT OUTLET

PRVDCVBH12X15MM

PRV, DCV WITH BLACK HANDLE SHUTOFF, WATERBLOCK KIT 1/4" PUSHFIT OUTLET X 15MM COMPRESSION INLET

PRVWBKIT14X15MM

WATER PRESSURE REGULATOR/WATERBLOCK 2.8BAR INSTALL KIT

PRVWBRESET15MMX12

PRV, DCV WITH BLACK HANDLE SHUTOFF, WATERBLOCK RESET, 15MM COPPER INLET

PRVWBRESETKIT15MM

PRV, DCV WITH BLACK HANDLE, WATERBLOCK KIT, 12MM PUSH FIT OUTLET

PRVDCVWBKIT12MMPF

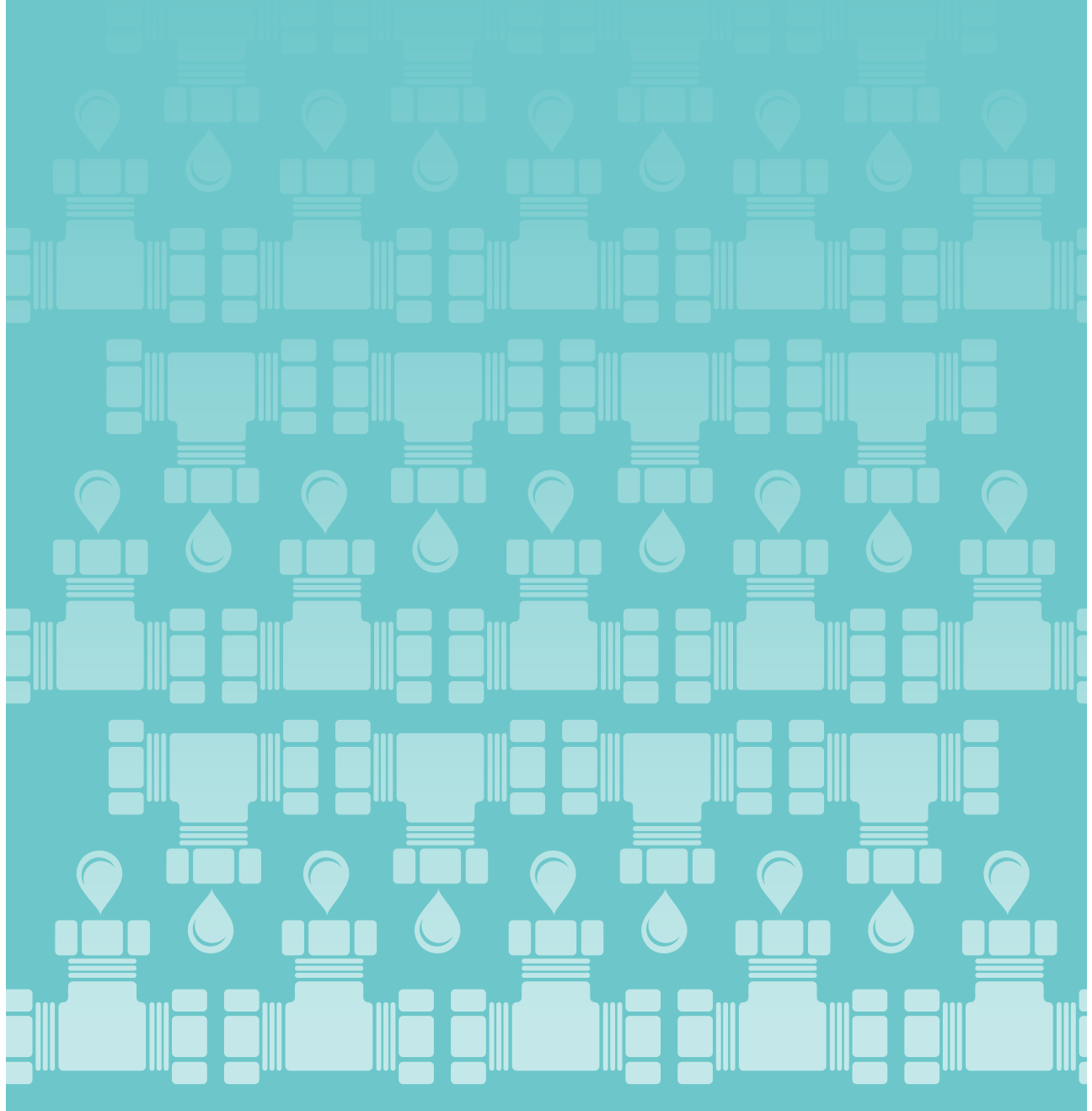
DCV WITH BLACK HANDLE, PRV - WRAS APPROVED, WATERBLOCK, EXTERNAL RESET DEVICE, 3/8" PF OUTLET.

PRVWBRESET15MMX3/8PF

FITTINGS

EXTENSIVE RANGE OF PLASTIC, BRASS AND STAINLESS STEEL FITTINGS
AVAILABLE FROM STOCK. WATERCARE ARE PROUD TO BE A
MASTER DMFIT DISTRIBUTER

PLASTIC / BRASS / STAINLESS STEEL / METAL



DM FITTINGS



WATERCARE IS A MASTER SUPPLIER OF DM FITTINGS FOR USE WITH SOFT DRINKS SYSTEMS, COFFEE AND VENDING MACHINES.



Our speedfit plumbing fittings and soft drink beverage connections make installation and maintenance so easy.

Ideal for coffee and vending machine installations and well as soft drink dispense systems.

They are a great value alternative to the John Guest Speedfit range.

THE RANGE INCLUDES:

- DM Fittings
- DM Water Fittings
- Male Connectors
- Female Connectors
- Speedfit Plumbing Fittings
- Polypropylene Fittings
- Soft Drink Beverage Connectors
- Beverage Installation Fittings
- Fluid Push Fit Connectors
- Check Valves
- Water Installation Fittings
- Vending Installation Fittings
- Coffee Installation Fittings
- Push Fit Connectors
- Pressure Reducing Valves
- Stainless Steel Fittings
- Oetiker Clamps and Clips
- JG LLDPE Tubing
- Flojet Bottles Water Pump
- Installation Fittings
- Push to Connect Fittings

DMfit produce a large range of quick-connect push fit fittings & tubing, which are great value alternatives to the John Guest Speedfit range.

A huge variety of fittings are available and they are designed for quick and convenient assembly and easy separation and re-use.

DM Fittings are suitable for hot water (up to 65C) and cold water applications only.

Sizings are available in Imperial (inches) and metric (millimetres)

DMfit fittings and valves feature an oval collet design for quick connections in plumbing, food service, soft drink dispensers and pneumatic systems.

To learn more visit:
www.watercare.co.uk/dm-fittings-fluid-push-fit-connectors



[VIEW CATALOGUE](#)



Part No.	Description	Price
DM-001	1/2" Male Connector	0.50
DM-002	1/2" Female Connector	0.50
DM-003	1/2" Male Connector	0.50
DM-004	1/2" Female Connector	0.50
DM-005	1/2" Male Connector	0.50
DM-006	1/2" Female Connector	0.50
DM-007	1/2" Male Connector	0.50
DM-008	1/2" Female Connector	0.50
DM-009	1/2" Male Connector	0.50
DM-010	1/2" Female Connector	0.50

[VIEW PRICE LIST](#)



FITTINGS

PLASTIC



Description	Part No
3/4 BSPF NYLON NUT (19MM BACK HOLE)	PLASTIC-3/4BSPNUT



Description	Part No
STRAIGHT 3/4" RETAINED 10.8 NYL WITH WASHER	PLASTIC-HOSESTRAIGHT3/4



Description	Part No
ELBOW 3/4" RETAINED 10.8 NYL WITH WASHER	PLASTIC-HOSEELBOW3/4



Description	Part No
3/4 BSPM X 3/8 BSPF WHITE ACETAL FITTING	EWCO0022



Description	Part No
DELRIN 3/4" BSP FEMALE X 3/8" BSP MALE FITTING	PLASTIC-34BSPFX38BSPM



Description	Part No
PLASTIC 1/4 X 1/4 BARB STRAIGHT	PLASTIC-BARBS1414
PLASTIC 3/8 X 3/8 BARB STRAIGHT	PLASTIC-BARBS3838
PLASTIC 3/8 X 1/4 BARB STRAIGHT	PLASTIC-BARBS3814
PLASTIC 1/4 X 1/4 X 1/4 BARB TEE	PLASTIC-BARBT141414
PLASTIC 3/8 X 3/8 X 3/8 BARB TEE	PLASTIC-BARBT383838
PLASTIC 3/8 X 1/4 X 3/8 BARB TEE	PLASTIC-BARBT381438
PLASTIC 1/4 X 1/4 BARB ELBOW	PLASTIC-BARBE1414
PLASTIC 3/8 X 3/8 BARB ELBOW	PLASTIC-BARBE3838

FITTINGS

PLASTIC

**Description**

3/4" BSPM X 3/4" BSPM ABS NIPPLE

Part No

EW1401

**Description**

3/4" BSPM X 3/8" BSPM ABS NIPPLE

Part No

EW1402

**Description**

3/4" BSPM X 3/8" STEM ABS NIPPLE

Part No

EW1403

**Description**

3/8BSPM X 3/8BSPM ABS NIPPLE

Part No

EW1410

FITTINGS

BRASS



Description

15MM BRASS STEM WITH SILICONE WASHER AND 3/4 FEMALE NUT

Part No

BRASS 15MMSTEM34NUT



Description

BRASS 15MM STEM X 1/2" BSPM (SHORT) ADAPTOR

Part No

BRASS 15MMSTEMX12
BSPMSHORT



Description

3/4" BSPM X 15MM STEM DZR BRASS

Part No

BRASS 15MMSTEMX34BSPM



Description

15MM BRASS COMPRESSION ELBOW

Part No

DEMCE15



Description

15MM BRASS COMPRESSION TEE EQUAL

Part No

DEMCT15



Description

15MM BRASS COMPRESSION X 3/4" BSPF

Part No

BRASS 15MMCX34BSPF



Description

15MM BRASS END STOP

Part No

BRASS 15MMSTOPEND

FITTINGS

STAINLESS STEEL



Description	Part No
S/STEEL BARB ELBOW 1/4 EQUAL	SSBARBE1414
S/STEEL BARB ELBOW 3/8 EQUAL	SSBARBE3838



Description	Part No
S/STEEL BARB STRAIGHT 1/4 EQUAL	SSBARBS1414
S/STEEL BARB STRAIGHT 3/8 X 1/4	SSBARBS3814
S/STEEL BARB STRAIGHT 3/8 EQUAL	SSBARBS3838
S/STEEL STRAIGHT 3/8" BARB, 140MM OVERALL LENGTH	SSBARBS3838-140MM



Description	Part No
S/STEEL BARB TEE 1/4 EQUAL	SSBARBT141414
STAINLESS STEEL BARB TEE 3/8 X 1/4 X 3/8	SSBARBT381438
S/STEEL BARB TEE 3/8 EQUAL	SSBARBT383838



Description	Part No
S/STEEL BARB U BEND 1/4 X 1/4	SSBARBU1414
S/STEEL BARB U 3/8 X 3/8	SSBARB3838(SSU0606)



Description	Part No
S/STEEL BARB Y PIECE 1/4 X 1/4 X 1/4	SSBARBY141414
S/STEEL BARB Y PIECE 3/8 X 3/8 X 1/4	SSBARBY381438
S/STEEL BARB Y PIECE 3/8 X 3/8 X 3/8	SSBARBY383838

FITTINGS

METAL

**Description**

3/8 X 1/8 M/F REDUCER TAPER

Part No

MW2104002

**Description**

F-E 6MM X 1/8" MALE TAPER METAL ELBOW

Part No

MW2F39C08

**Description**

6MM PUSHFIT X M5 PARALLEL MALE THREAD ELBOW

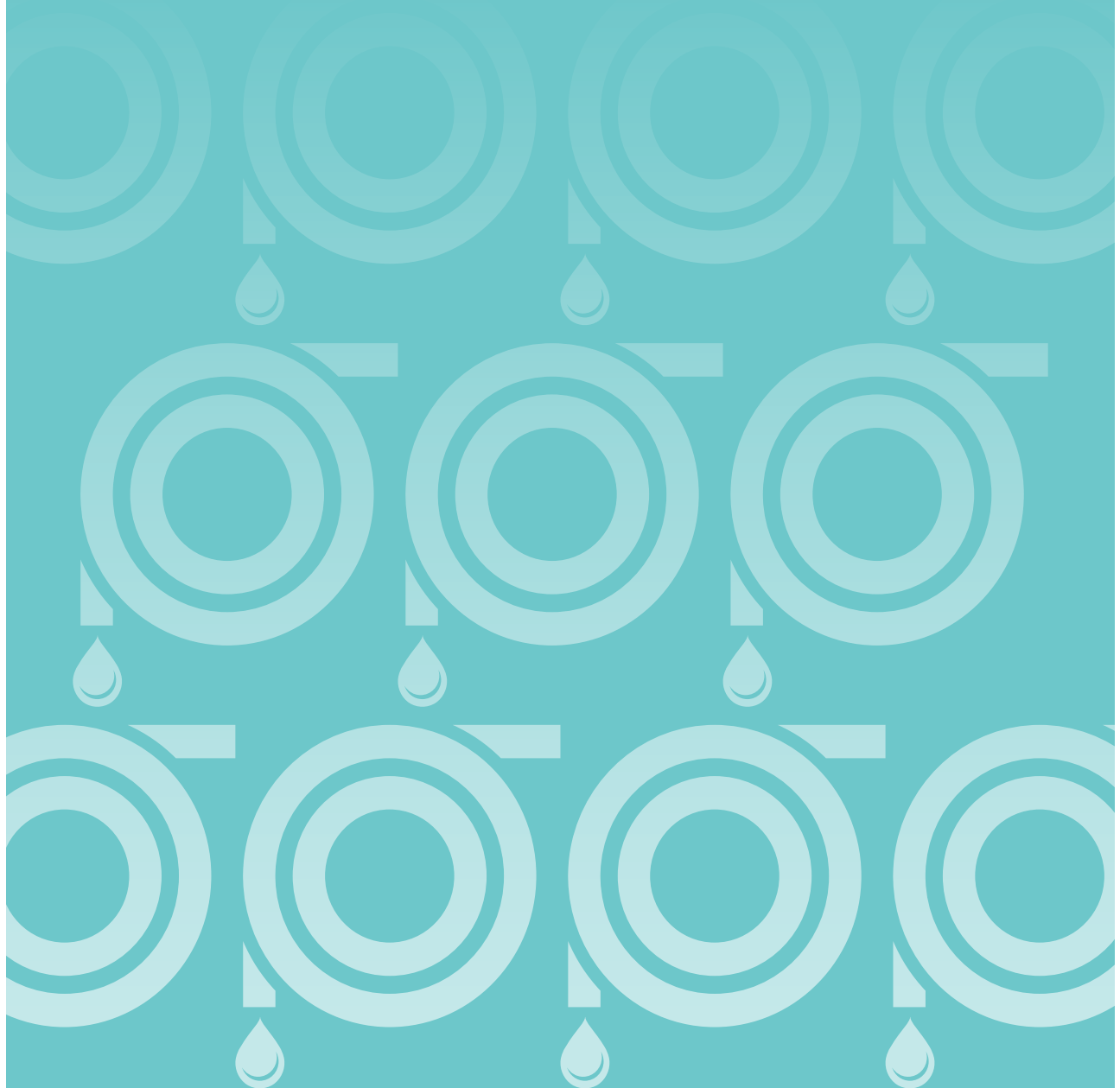
Part No

MW2L31007

TUBING / HOSES

FLUID TRANSFER TUBING FOR LIQUID/DRINKS DISPENSE.

**HOSES/SILICONE/PVC/HYDRAVEND/MDPE
BRAIDED PVC/INSULTUBE**



TUBING / HOSES

HOSES - Hydrovend hoses available in 6mm ID and 10mm ID, various lengths and any fitting required



Description	Part No
HV10 1500MM 3/4" PLASTIC ELBOW RETAINED X 3/4" PLASTIC STRAIGHT RETAINED	HOSE-SPECIAL-001
HV10 2000MM 3/4" PLASTIC STRAIGHT RETAINED X 3/4" PLASTIC ELBOW RETAINED HOSE	HOSE-SPECIAL-002
HV10 450MM 3/4 PLASTIC ELBOW RETAINED X 3/4 PLASTIC STRAIGHT RETAINED	HOSE-SPECIAL-003
HV10 550M 3/4 PLASTIC ELBOW X 3/4 PLASTIC STRAIGHT BOTH WITH PLASTIC NUTS	HOSE-SPECIAL-004



Description	Part No
HV10 1500MM 3/4 PLASTIC ELBOW & PLASTIC NUT 15MM BRASS STANDPIPE	HOSE-SPECIAL-005



Description	Part No
HV6 600MM 3/4 BRASS ELBOW X 1/4" BRASS STRAIGHT BRASS NUTS	HOSE-SPECIAL-006



Description	Part No
HV6 2000MM STRAIGHT 1/4" FEMALE WITH EPDM WASHER TO 15MM SP	HOSE-SPECIAL-007

SILICONE - Various colours and sizes available, please contact sales



Description	Part No
BRAIDED SILICONE TRANSLUCENT 4MMID X 9MMOD	SILBRAIDTRANS 4MMIDX9MMOD
TRANSLUCENT PLATINUM SILICONE 100MM WIDE X 2.6MM THICK 60SHORE	SILTRANS2.6MM100MM
TRANSLUCENT PLATINUM 60 SHORE SILICONE TUBING 6MMID X 9MMOD	SILTRANS6MMIDX9MMOD
TRANSLUCENT PLATINUM 60SHORE SILICONE TUBE 8MMID X 12MMOD	SILTRANS8MMIDX12MMOD
TRANSLUCENT PLATINUM 60SHORE SILICONE 9MMID X 15MMOD	SILTRANS9MMIDX15MMOD
TRANSLUCENT PLATINUM 60 SHORE SILICONE TUBING 10MMID X 14MMOD	SILTRANS10MMIDX14MMOD
TRANSLUCENT PLATINUM 60 SHORE SILICONE TUBING 12MMID X 16MMOD	SILTRANS12MMIDX16MMOD
WHITE PLATINUM 70SHORE SILICONE TUBE 4MMID X 8MMOD	SILWHITE4MMIDX8MMOD
GREY PLATINUM CURED SILICONE 60SH FDA 8MMID X 13MMOD (50M COILS)	SILGREY8MMIDX13MMOD

TUBING / HOSES

TUBING



Description	Part No
HYDRAVEND 10 (50METRE COILS)	TUBING-HV10
12.5/18.5 VEND HOSE	TUBING-12.5/18.5VENDHOSE
BLACK PVC WOUND DUCTING/TUBING 16MMID X 20.7MMOD	TUBING16MMIDPVCSPIRAL
PE ULTRA NATURAL TUBING 6.7MM X 9.5MM (3/8" OD, 100M COILS)	TUBING400019.100BVX
1/2OD X 3/8ID BLACK MDPE TUBING (30M COIL)	TUBING401024FBVX
GREY CO2 PE ULTRA TUBING 3/8" OD (100METRE COILS)	TUBING405019BVX
5/16" NATURAL BEERLINE TUBING 100M COILS	TUBING410002.100BVX
PE ULTRA NATURAL 0.117" X 3/16 100M COIL	TUBING410005.100BVX
MDP BLUE 9.5MM X 6.7MM (3/8" OD)	TUBING413019BVX
3/8 CLEAR FOOD GRADE PVC TUBING (10MM X 16MM) 30 METRE COILS	TUBING440026G
PVC BRAIDED HOSE, CLEAR FOOD GRADE 10MMID X 16MMOD (30M COIL)	TUBINGPVCBRAIDED10MMIDX16MMOD
PVC BRAIDED HOSE, CLEAR FOOD GRADE 12.5MMID X 18MMOD (30M COIL)	TUBINGPVCBRAIDED12.5MMIDX18MMOD
GLYCOL TUBE BLACK 10MMID X 15MMOD (HEAT DUMP TUBING)	TUBING85TD621045.30BV



Description	Part No
BLACK INSULATION TUBE 10MM ID X 6MM WALL 46 METRE COIL	INSULTUBE10IDX6MMWALL
BLACK INSULATION TUBE 10MM ID X 9MM WALL 34 METER COIL	INSULTUBE10MMIDX9MMWALL
BLACK INSULATION TUBE 12MM ID X 9MM WALL (1/2") 31 METRE COIL	INSULTUBE12IDX9MMWALL

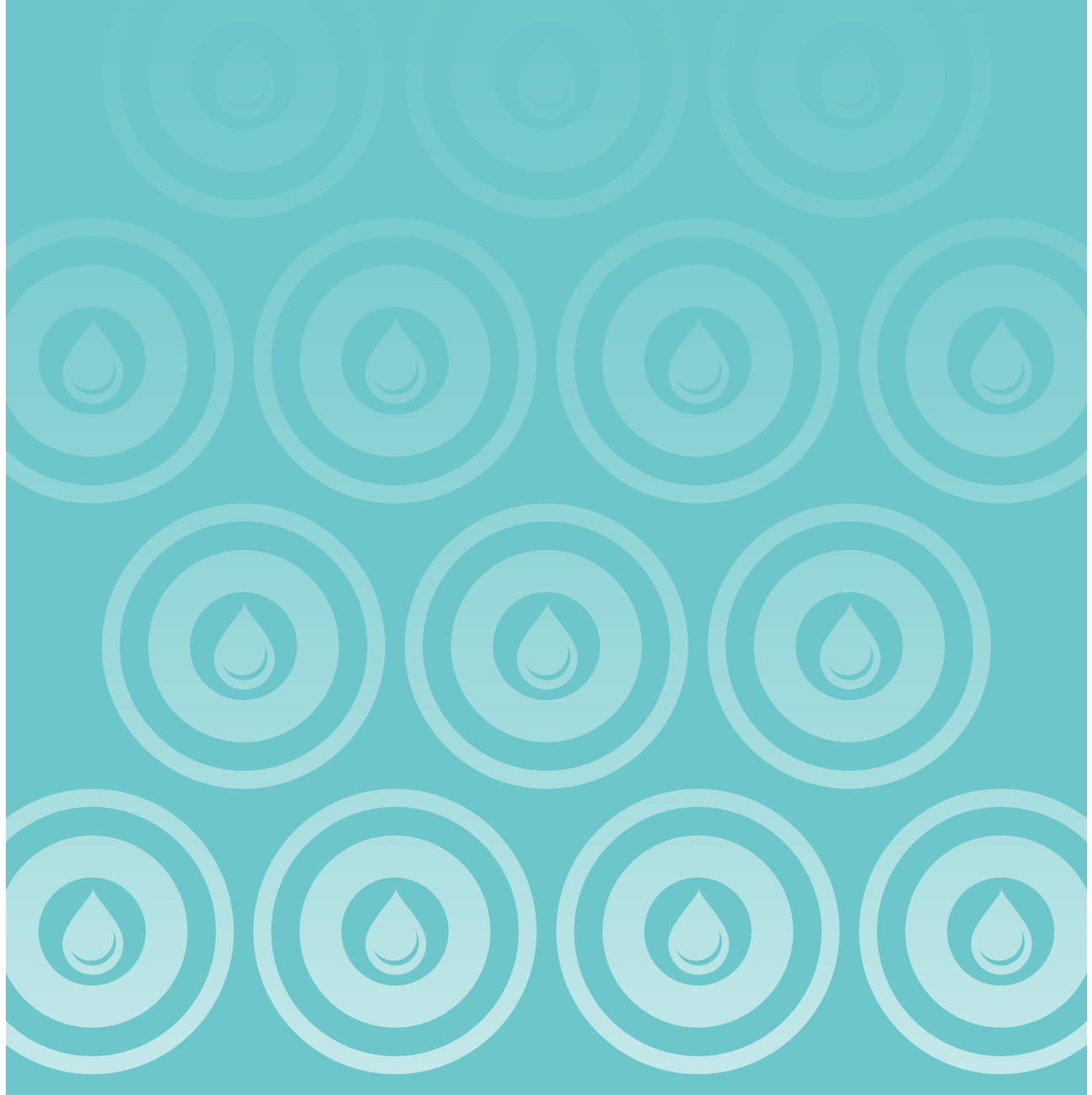


Description	Part No
K-FLEX ADHESIVE INSULATION TAPE 50MM WIDE X 3MM THICK X 15 METRE LONG	TAPE-ADHESIVE50MMX3MMX15M

O'RINGS / WASHERS

FULL RANGE OF O-RINGS AND WASHERS AVAILABLE FROM STOCK.
IF YOU DO NOT SEE WHAT YOU REQUIRE PLEASE CONTACT
SALES AS ALL SIZES AND MATERIALS AVAILABLE.

WASHERS / O'RINGS



O RINGS / WASHERS

WASHERS



Description

3/4" BLACK WASHER NITRILE NBR70

Part No

3/4BLACK-WASHER



Description

400-867-4490-41E 12MM
GERMAN SELF CENTRE BONDED WASHER

Part No

WASHER-CO2BOTTLE



Description

3/4" RUBBER WASHER
WITH S/S GAUZE FILTER MESH NBR70

Part No

WASHER-FILTER-3/4



Description

3/4" WHITE SILICONE WASHER 3/4 X 14MM X 2.25MM

Part No

WASHER-3/4WHITESILICONE

O'RINGS



Description

12MM X 2MM NITRILE 70 O RING

Part No

ORING-12X2

BS1806-010 6.7MMID X 1.78MM SECTION VITON O RING

ORING-6.7X1.78

EM072X05N70

ORING-72X5

82.14MM X 3.53MM O RING NBR70 (IX V1 HOUSING)

ORING-82.14X3.53

If you do not see the size you require please contact Parts Division Sales Team for a quotation.

SOFT DRINKS / BARGUN PARTS

WE STOCK ALL WUNDERBAR ORIGINAL SPARE PARTS.
CONTACT SALES DEPARTMENT FOR ANYTHING NOT LISTED.

**424 PARTS / SPRINGS / BUTTONS / MISC / PLASTIC / O'RINGS,
CONNECTORS / TOOLS / BUTTON CAPS / VALVES**



SOFT DRINKS / BARGUN SPARES

424 VALVE PARTS

**Description**

DIFFUSER INSERT SET 424 SERIES SODA

Part No

424VALVE-DIFFUSERINSERT

**Description**

CLEAR NOZZLE FOR 424 SERIES SODA

Part No

424VALVE-NOZZLE

**Description**

SYRUP SEPARATOR S-TUBE (424 VALVE)

Part No

SYRUPSEP-424VALVE

SPRINGS/BUTTONS/MISC

**Description**

H RETAINER PLATE

Part No

BARGUN-PH10-109

**Description**

PLUG LOCKING ACCESS WITH FLANGE

Part No

BARGUN-PH10-136

**Description**

TUBE FERRULE POLYPROP

Part No

BARGUN-PH10-17

TUBE FERRULE CAP POLYPROPYLENE

BARGUN-PH10-18

SOFT DRINKS / BARGUN SPARES

SPRINGS/BUTTONS/MISC



Description

STEM SPRING

Part No

BARGUN-PH10-21



Description

BUTTON PLATE SCREW. STAINLESS STEEL, 6-32-1/2"

Part No

BARGUN-SCREW-PH10-3



Description

BUTTON STEM SNAP-ON

Part No

BARGUN-PH10-73



Description

PREMIX SNAP ON BUTTON LONG

Part No

BARGUN-PH10-75



Description

SNAP ON OVAL BUTTON

Part No

BARGUN-PH10-76



Description

SANTOPRENE VALVE STEM

Part No

BARGUN-PH10-89

SOFT DRINKS / BARGUN SPARES

PLASTIC PARTS



Description	Part No
BLACK SPLIT HANDLE HEEL MK2 & 2.5	BARGUN-PH10-137
BLACK SPLIT HANDLE HEEL MK 4	BARGUN-PH10-138



Description	Part No
BLACK 10B BUTTON PLATE	BARGUN-PH10-2
BLACK 8B BUTTON PLATE	BARGUN-PH10-2-8



Description	Part No
BLACK BOTTOM PLATE	BARGUN-PH10-27



Description	Part No
BLACK BUTTON PLUG	BARGUN-PH10-37



Description	Part No
BLACK EXTENDED NOZZLE MK2	BARGUN-PH10-93



Description	Part No
BLACK EXTENDED TWIST LOCK NOZZLE MK2.5 & 3	BARGUN-PH10-94



Description	Part No
UNIVERSAL SYRUP SEPARATOR	SYRUPSEP-PH10-83

SOFT DRINKS / BARGUN SPARES

O'RINGS



Description	Part No
STEM O RING RED SILICONE (1.5 X 1.5)	BARGUN-PH10-20-E
HAT O RING	BARGUN-PH10-26
DIFFUSER O RING MK2 (26.57 X 3.53MM)	BARGUN-PH10-30
DIFFUSER O RING MK2.5 & 3 (28.5 X 2.62MM)	BARGUN-PH14-30-E
O RING INLET FITTING (BLACK)-MANIFOLD	BARGUN-PM10-14
BRIX SCREW O RING	BARGUN-PM10-6

CONNECTORS / TOOLS



Description	Part No
TOOL FOR O RING INSERT	BARGUN-PH10-36



Description	Part No
BAG IN BOX CONNECTOR GREEN ENCORE 3/8" BARB	BIB-GREENENCORE



Description	Part No
BRIX CUP, MULTIPLEX RATIO 5:1	BRIXCUP-99-5509



Description	Part No
BRIX CUP 5:1 AND 5.5:1	BRIXCUP-99-9012



Description	Part No
TAPRITE CARBONATION TESTER PC SUGARED PEPSI PRODUCTS	CARBTESTER

SOFT DRINKS / BARGUN SPARES

CONNECTORS / TOOLS



Description	Part No
PYTHON CUTTERS	CUTTERS-PYTHON



Description	Part No
PREMIX DISCONNECT LIQUID 1/4 FLARE BLACK	DISCONNECT27-1100-99
PREMIX DISCONNECT GAS 1/4" BARB GREY	DISCONNECT27-1102-77
PREMIX DISCONNECT LIQUID 3/8 BARB BLACK	DISCONNECT27-1103-99



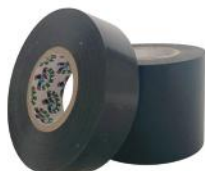
Description	Part No
BIB CONNECTOR (33020)	QCDII



Description	Part No
CO2 SPANNER	SPANNERCO2
COMBINATION SPANNER	COMBINATIONSPELLER



Description	Part No
STRAP FOR CO2 BOTTLE	STRAP-CO2BOTTLE



Description	Part No
1" BLACK TAPE 20M ROLL	TAPE001
2" BLACK TAPE 33M ROLL	TAPE002



Description	Part No
3 WAY CORDIAL VALVE SWAN NECK BARB INLET	VALVE-CORDIAL003
3 WAY CORDIAL VALVE SHORT SPOUT, BARB INLET	VALVE-CORDIAL003SHORTSPOUT

SOFT DRINKS / BARGUN SPARES

BUTTON CAPS



Description	Part No
ROUND SNAP ON BUTTON CAP GREEN/WHITE A	BARGUN-PH10-74-001-A
ROUND SNAP ON BUTTON CAP WHITE/BLACK C	BARGUN-PH10-74-004-C
ROUND SNAP ON BUTTON CAP WHITE/BLACK L	BARGUN-PH10-74-016-L
ROUND SNAP ON BUTTON CAP ORANGE/BLACK O	BARGUN-PH10-74-019-ORANGE-O
ROUND SNAP ON BUTTON CAP WHITE/BLACK T	BARGUN-PH10-74-035-T
ROUND SNAPON BUTTON CAP RED/WHITE CRAN	BARGUN-PH10-74-068-CRAN
ROUND SNAPON BUTTON CAP WHITE/BLACK DIET	BARGUN-PH10-74-073-DIETW/BLK
ROUND SNAP ON BUTTON CAP ORANGE	BARGUN-PH10-74-116-ORANGE
ROUND SNAPON BUTTON CAP WHITE/BLACK ENRGY	BARGUN-PH10-74-170-ENRGY
ROUND SNAP ON BUTTON CAP GREEN	BARGUN-PH10-74-186-GREEN
ROUND SNAP ON BUTTON CAP PURPLE	BARGUN-PH10-74-188-PURPLE
ROUND SNAP ON BUTTON CAP BLACK/WHITE MAX	BARGUN-PH10-74-282-MAX
ROUND SNAP ON BUTTON CAP BLUE/WHITE PEPSI	BARGUN-PH10-74-123-PEPSI
OVAL SNAP ON BUTTON CAP SODA	BARGUN-PH10-77-500-SODA
OVAL SNAP ON BUTTON CAP WATER	BARGUN-PH10-77-501-WATER

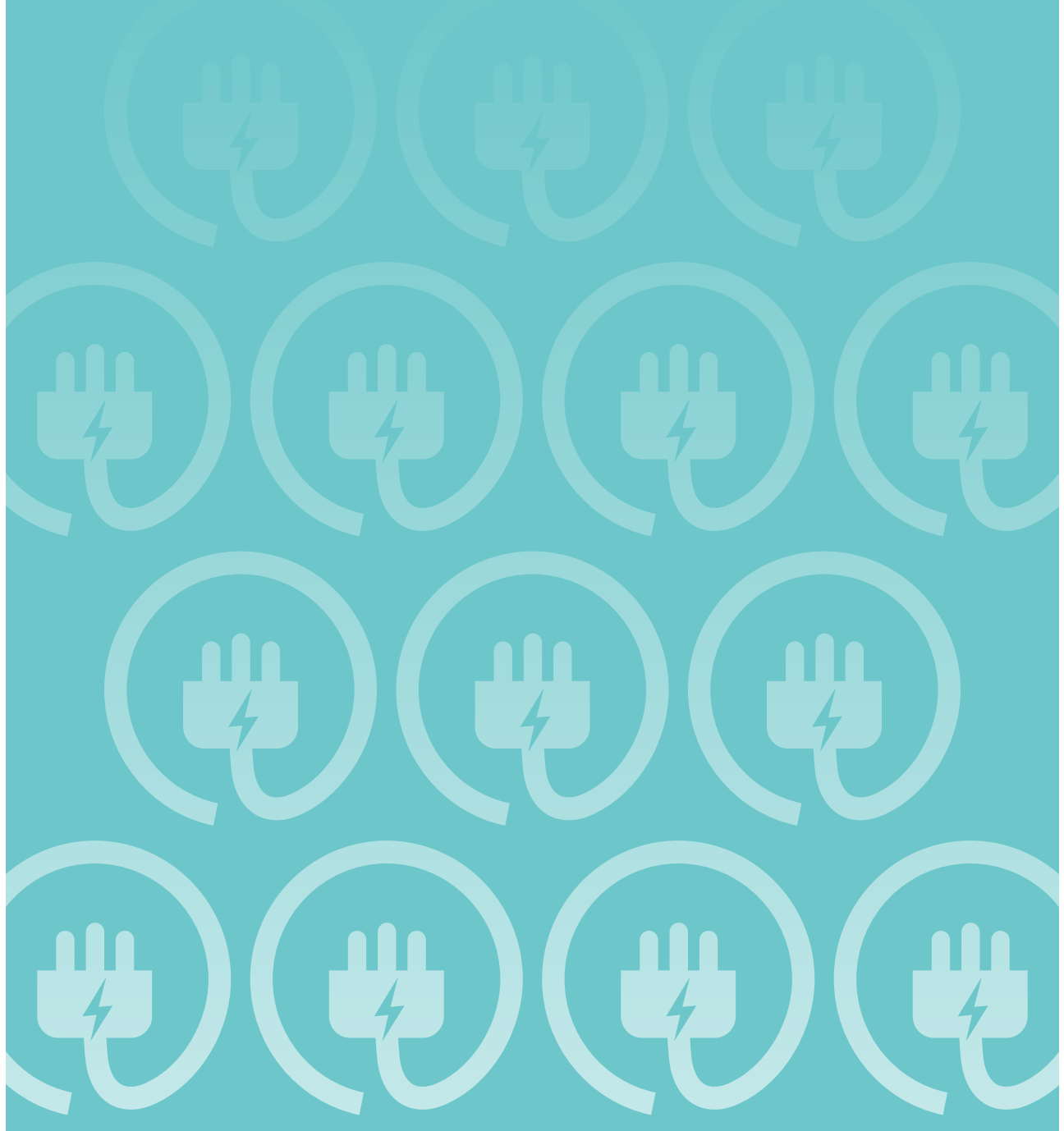


Description	Part No
FLOJET CHANGE OVER VALVE	CHANGEOVER01603230A

ELECTRICAL

ELECTRICAL PARTS FOR DRINKS DISPENSERS AND COFFEE MACHINES.

CORD SETS / PLUGS



ELECTRICAL



Description	Part No
BLACK 2METRE LEAD UK 13A MOULDED 1.5MM SQ.	LEAD-2MUK13A1.5MMSQ
BLACK 2M 5AMP MOULDED PLUG 3 CORE X 0.75MMSQ STRIPPED END	LEAD-2MUK5A0.75MMSQ

Power cords available in all types and lengths. Contact sales if you do not see what you need.

HYGIENE

COMPLETE RANGE OF CLEANING AND DISINFECTING PRODUCTS FOR COFFEE, VENDING AND WATER APPLICATIONS, PROVIDING SAFE CLEANING SOLUTIONS. MSDS AND COSHH SHEETS AVAILABLE UPON REQUEST.

TABLETS / POWDER / LIQUID / CLEANING MISC



HYGIENE

TABLETS



Description

CHLORINE TABLETS 1.7G 200 TO A TUB, 6 TUBS TO A CASE

Part No

CHLORINETABLETS



Description

100 X 2.4GRAM ESPRESSO CLEANING TABLETS 18MM DIA X 6MM DEPTH (BOX QTY 6 TUBS)

Part No

TABLETS-ESPRESSOCLEANING 18MMX6MM

Dissolving times for Java Tablets

Water Temp °C	Time / mm:ss
90	00:25
80	00:38
70	01:50
60	02:35



Description

CAFIZA E31 ESPRESSO MACHINE CLEANING TABLETS - 2G (100) 12 IN A BOX

Part No

URNEX-E31 BREWERTABLETS



Description

URNEX M61 MILK CLEANING TABLETS 120 TABLETS IN A TUB 4G TABLETS 12 IN A BOX

Part No

URNEX-M61 TABLETS

LIQUID



Description

PHOSPHORIC ACID LIQUID DESCALER 1 LITRE BOTTLE

Part No

DESCALER-LIQUID 1L



Description

PHOSPHORIC ACID ALL PURPOSE RAPID DESCALER 5 LITRE

Part No

DESCALER-PHOSACID5L

HYGIENE

LIQUID



Description	Part No
STAINLESS STEEL CLEANER 750ML SPRAY BOTTLE	CLEANER-SSTEEL



Description	Part No
BLUE MILKLINE CLEANER (BOX QTY 6 X 1L)	MILKLINE-BLUE



Description	Part No
GENERAL SURFACE CLEANER 750ML	SANITIZER-SPRAY



Description	Part No
VENDING AND BREWER CLEANER 1 LITRE	BREWERCLEANER1



Description	Part No
RED INTERNAL WATERCOOLER SANITISER 1 LITRE	SANITISERHP1
RED INTERNAL WATERCOOLER SANITISER 5 LITRE	SANITISERHP5



Description	Part No
FOAMING DESCALER 700ML SPRAY	DESCALER-FOAMINGSPRAY700ML
FOAMING DESCALER 5 LITRE READY TO USE	DESCALER-FOAMIN5L-RTU

HYGIENE

LIQUID



Description	Part No
ANTI-BACTERIAL SANITISER READY TO USE 700ML SPRAY BOTTLE	SANITISER-ANTIBAC700ML
ANTI-BACTERIAL SANITISER CONCENTRATE 5 LITRE BOTTLE	SANITISER-ANTIBAC5LCONC

POWDER



Description	Part No
BOILER DESCALER SULPHAMIC ACID 1 KG	DESCALER-POWDERBOILER1KG

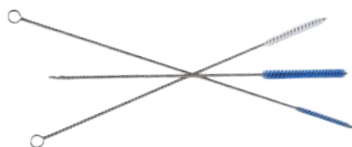


Description	Part No
DETANNIN POWDER 500G TUB WITH SCOOP	DETANNIN500G



Description	Part No
ESPRESSO/BACKFLUSH CLEANING POWDER 500GM TUB	CLEANER-BACKFLUSH

CLEANING MISC



Description	Part No
BRUSH WHITE OVERALL LENGTH 318MM X BRISTLE LENGTH 76MM X BRISTLE WIDTH 7.9MM	BRUSH-WHITE318X76X7.9
BRUSH BLUE OVERALL LENGTH 305MM X BRISTLE LENGTH 95MM X BRISTLE WIDTH 9.5MM	BRUSH-BLUE305X95X9.5
BRUSH BLUE OVERALL LENGTH 356MM X BRISTLE LENGTH 65MM X BRISTLE WIDTH 4.8MM	BRUSH-BLUE356X65X4.8
BRUSH BLUE OVERALL LENGTH 500MM X BRISTLE LENGTH 76MM X BRISTLE WIDTH 4.8MM	BRUSH-BLUE500X76X4.8



Description	Part No
SET OF FOUR SMALL CLEANING BRUSHES	BRUSH-SET4

[Please call for sizes and details](#)



Description	Part No
SET OF 2 SILICONE BRUSHES BLUE, OVERALL LENGTH 240MM, BRISTLE LENGTH 95MM, 1 X 6MM BRISTLE WIDTH, 1 X 8MM BRISTLE WIDTH.	BRUSHSET-X2SILICONE

HYGIENE

CLEANING MISC



Description

BLUE ROLL 2 PLY, 10" WIDE, 40M PER ROLL

Part No

BLUEROLL-2PLY



Description

LINT FREE DRY WIPE 16" X 11.5" 1 = BOX OF 350 WIPES

Part No

WIPE-DRYLF-BOX



Description

CLEAR POLY COOLER BAG 22" X 34" X 44", 120 GAUGE
(1 = BOX OF 200 BAGS)

Part No

BAG-CLEAR22X34X44



Description

BLUE POWDER FREE VINYL GLOVES SIZE MEDIUM,
BOX OF 100 GLOVES

Part No

GLOVES-PFBLUE-VINYL-MED

BLUE POWDER FREE VINYL GLOVES SIZE LARGE,
BOX OF 100 GLOVES

GLOVES-PFBLUE-VINYL-LARGE



Description

BLUE POWDER FREE NITRILE GLOVES SIZE MEDIUM,
BOX OF 100 GLOVES

Part No

GLOVES-PFBLUE-NITRILE-MED

BLUE POWDER FREE NITRILE GLOVES SIZE LARGE,
BOX OF 100 GLOVES

GLOVES-PFBLUE-NITRILE-LARGE

WATER FILTERS

WATERCARE / BRITA / BWT / 3M / EVERPURE



WATER FILTERS



WATERCARE IX



Description	Part No
IX MINI INLINE 1 MICRON 3/8" PUSHFIT	IXMINI-1M



Description	Code
IX HEAD WITH 3/8" PUSH FITTINGS INLET AND OUTLET	IXHEAD-3/8DM-V2
IX HEAD WITH 3/8" PUSH FITTINGS INLET AND OUTLET WITH DIGITAL METER	IXHEAD-3/8DM-DIGI-V2
IX HEAD WITH 3/8" BSP FITTINGS INLET AND OUTLET	IXHEAD-3/8BSP-V2
IX HEAD WITH 3/8" BSP FITTINGS INLET AND OUTLET WITH DIGITAL METER	IXHEAD-3/8BSP-DIGI-V2

Please note: All IX Cartridges will need a head on initial install.



Description	Code
IX01 ION EXCHANGE ASSEMBLED CARTRIDGE AND RESIN REFILL (WITHOUT HEAD)	IX01 CART-V2
IX02 ION EXCHANGE ASSEMBLED CARTRIDGE AND RESIN REFILL (WITHOUT HEAD)	IX02CART-V2
IX01 ION REFILL	IX01 REFILL-V2
IX02 ION REFILL	IX02REFILL-V2



Description	Code
IX01 CARBON ASSEMBLED CARTRIDGE AND REFILL (WITHOUT HEAD)	IX01 CARBONCART-V2
IX02 CARBON ASSEMBLED CARTRIDGE AND REFILL (WITHOUT HEAD)	IX02CARBONCART-V2
IX01 CARBON REFILL	IX01 CARBONREFILL-V2
IX02 CARBON REFILL	IX02CARBONREFILL-V2



Description	Code
IX01 VEND ASSEMBLED CARTRIDGE AND REFILL (WITHOUT HEAD)	IX01 VENDCART-V2
IX02 VEND ASSEMBLED CARTRIDGE AND REFILL (WITHOUT HEAD)	IX02VENDCART-V2
IX01 VEND REFILL	IX01 VENDREFILL-V2
IX02 VEND REFILL	IX02VENDREFILL-V2

WATER FILTERS



WATERCARE IX



Description	Code
IX01 ICE ASSEMBLED CARTRIDGE AND REFILL (WITHOUT HEAD)	IX01ICECART-V2
IX02 ICE ASSEMBLED CARTRIDGE AND REFILL (WITHOUT HEAD)	IX02ICECART-V2
IX01 ICE REFILL	IX01ICEREFILL-V2
IX02 ICE REFILL	IX02ICEREFILL-V2



Description	Code
IX01 POSTMIX ASSEMBLED CARTRIDGE AND REFILL (WITHOUT HEAD)	IX01POSTMIXCART-V2
IX02 POSTMIX ASSEMBLED CARTRIDGE AND REFILL (WITHOUT HEAD)	IX02POSTMIXCART-V2
IX01 POSTMIX REFILL	IX01POSTMIXREFILL-V2
IX02 POSTMIX REFILL	IX02POSTMIXREFILL-V2



Description	Code
SPANNER ADAPTOR	EW1704



Description	Code
IX SPANNER	EW1505

WATERCARE CTUs



Description	Code New	CTU Packs* Code (2Port)
CTU PRIMA FOR COFFEE EQUIPMENT 5 LITRE	PRIMA-5	PRIMA-5-PK
CTU PRIMA FOR COFFEE EQUIPMENT 10 LITRE	PRIMA-10	PRIMA-10-PK
CTU PRIMA FOR COFFEE EQUIPMENT 18 LITRE	PRIMA-18	PRIMA-18-PK

*Packs include meter and hoses.



Description	Code
DN 15 COLD WATER MULTIJET WATER METER	METER-CW-001

WATER FILTERS



BRITA Other Brita filters available upon request, please contact sales



Description	Part No
S/C 1002730 - PURITY C50 QUELL	BRITC50



Description	Part No
BRITA AQUAQUELL PURITY C 150 REPLACEMENT CARTRIDGE UP TO 1700 LITRE CAPACITY AT 10 °KH, 4°C - 30°C, 8.6 BAR OPERATING PRESSURE	BRITC150
BRITA AQUAQUELL PURITY C 300 REPLACEMENT CARTRIDGE UP TO 3400 LITRE CAPACITY AT 10 °KH, 4°C - 30°C, 8.6 BAR OPERATING PRESSURE	BRITC300
BRITA AQUAQUELL PURITY C 500 REPLACEMENT CARTRIDGE UP TO 7000 LITRE CAPACITY AT 10 °KH, 4°C - 30°C, 8.6 BAR OPERATING PRESSURE	BRITC500



Description	Part No
BRITA C1100	BRITC1100



Description	Part No
BRITA C.500 FINEST	BRITC500FINE



Description	Part No
BRITA PURITY C FRESH CARTRIDGE	BRITCFRESH



Description	Part No
S/C 1002952 - FILTER HEAD 30% BLEND FOR PURITY C RANGE	BRITHC30
FILTER HEAD 0-70% BLEND FOR PURITY C RANGE	BRITHC0-70



Description	Part No
S/C 298900 - BRITA PURITY C FLOW METER	BRITMETER

WATER FILTERS



BWT HEADS



FEATURES

Can be fixed to any BWT water+more filter. A non-return valve on the inlet side prevents any ingress of water into the drinking water system and a similar valve on the outlet side seals the filter off from the end device (e.g. coffee machine). Both non-return valves close if there is a sudden drop in pressure, which prevents leakage and water discharge during replacement of the filter. The dual system is rounded off by the BWT bestflush bleed valve.

Description	CONNECTION	Part No
BWT FILTER HEAD	LOCKABLE BYPASS, AUTO SHUT-OFF WITH NRV'S. 3/8" BSP	BWT-HEAD



FEATURES

With BWT besthead FLEX, the filter head with the world's most flexible connector technology, installing the filter is really easy, even where space is tight. Its innovative FLEX technology with its configured angle adjustment in 30° increments allows for the best possible orientation of the connector hoses, even where space is at a premium.

Description	CONNECTION	Part No
BWT BESTHEAD FLEX	3/8" - OTHER SIZES AVAILABLE	BWT-BESTHEADFLEX

BWT BESTMAX



FEATURES

Raw water needs to be optimised for the specific requirements of the catering industry (HORECA). BWT bestmax provides you with a universal filter system that fulfils this task simply and efficiently. The filter system consists of a filter cartridge with five filter levels and a BWT besthead filter head that is screwed on. The blend partial flow (0–3) is set on the filter head depending on the water hardness and requirement.

APPLICATIONS: For coffee and steam ovens

Description	Dimensions HxWmm	Capacity (ltrs) Vending	Capacity (ltrs) Coffee MC + Steam	Capacity (ltrs) Steam Oven/ICE	Part No
BWT BESTMAX M	500 x 130	3800	2835	2180	BWT-MAX-M
BWT BESTMAX L	530 x 145	5200	3885	2985	BWT-MAX-L
BWT BESTMAX XL	530 x 145	6800	5080	3905	BWT-MAX-XL
BWT BESTMAX 2XL	600 x 185	12000	8965	6895	BWT-MAX-2XL



WATER FILTERS

BWT BESTMAX PREMIUM



FEATURES

BWT Bestmax PREMIUM is a filter system with which you can refine raw water to produce gourmet water that is outstandingly suited to making hot beverages such as coffee, espresso and tea. The modular multi-stage filter uses patented BWT Magnesium Technology, which also mineralises the filtrate with magnesium. This flavour carrier guarantees high sensory quality in both the water and the products made from it. The filter system consists of a filter cartridge with a BWT besthead filter head that is screwed on. The blend partial flow (0–3) is set on the filter head depending on the water hardness and requirement.

APPLICATIONS: For coffee and vending machines

Description	Dimensions HxWmm	Capacity (ltrs) Vending	Capacity (ltrs) Coffee MC + Steam	Part No
BWT BESTMAX PREMIUM XL	530 x 145	3900	3250	BWT-MAXPREMIUM-XL
BWT BESTMAX PREMIUM 2XL	600 x 185	6350	5290	BWT-MAXPREMIUM-2XL

BWT BESTMAX SOFT



FEATURES

Perfect coffee water from every water type – that’s the BWT water+more promise. Joining our world-beating hot drinks range of filters, BWT bestmax SOFT targets raw water with low carbonate hardness. Providing taste and odour filtration, pH maintenance and pinpoint scale management, BWT bestmax SOFT offers coffee shops in ‘soft’ water areas good machine protection and great hot drink quality.

APPLICATIONS: For optimising already soft water for drinks equipment

Description	Dimensions HxWmm	Capacity (ltrs) H+C Drink No Steam	Capacity (ltrs) Coffee MC + Steam	Part No
BWT BESTMAX SOFT XL	530 x 145	6800	5080	BWT-MAXSOFT-XL
BWT BESTMAX SOFT 2XL	600 x 185	12000	8965	BWT-MAXSOFT-2XL

WATER FILTERS



BWT BESTPROTECT



FEATURES

With BWT bestprotect, you can optimise raw water for catering applications in a targeted way. This filter system ensures balanced mineralisation and a consistently high pH value in the filtrate – key factors that minimise the risk of corrosion. Hardness-forming calcium ions are practically entirely removed and deposits of limescale and gypsum prevented in the case of raw water containing carbonates or sulphates. Insoluble or difficult-to-remove deposits in machines are now a thing of the past. The filter system consists of a filter cartridge with a BWT besthead filter head.

APPLICATIONS: For protecting catering and vending equipment

Description	Dimensions HxWmm	Capacity (ltrs)	Part No
BWT BESTPROTECT XL	530 x 145	2620	BWT-PROTECT-XL
BWT BESTPROTECT 2XL	600 x 185	5000	BWT-PROTECT-2XL

BWT BESTTASTE



FEATURES

BWT besttaste is a water treatment system for the elimination of particles and chlorine from, and the improvement of the odour and taste of, drinking water. besttaste improves the quality of the water for use in coffee machines as well as in hot and cold drink machines. With BWT besttaste, water from water dispensers is of a consistently high quality. Even coffee and vending machines in areas of low carbonate hardness will benefit from the improved water quality.

APPLICATIONS: For drinking water, coffee and vending

Description	Dimensions HxWmm	Capacity (ltrs)	Part No
BWT BESTTASTE	300 x 65	10000	BWT-TASTE-X
BWT BESTTASTE S	385 x 65	40000	BWT-TASTE-S



WATER FILTERS

BWT BESTMIN PREMIUM



FEATURES

BWT bestmin filter cartridges optimise water with a low mineral content for use in the food service sector. This often applies to water in holiday locations, for example from lakes and reservoirs and the water produced by reverse osmosis in seawater treatment plants. BWT bestmin is the perfect solution for restoring this deficiency. The balanced combination of natural minerals in the BWT bestmin filter adds the correct level of minerals to the water used in the food service sector, achieving an optimum brewing and full-taste experience for hot and cold drinks. BWT bestmin gives stale-tasting water a superb sensory quality that brings out the full flavour of hot drinks.

APPLICATIONS: For perfect mineralisation in coffee and vending equipment

Description	Dimensions HxWmm	Capacity (ltrs)	Part No
BWT BESTMIN PREMIUM M	500 x 130	10000	BWT-MINPREMIUM-M

BWT BESTCARE



FEATURES

With the increasing popularity of water dispensers BWT Bestcare provides maximum defence against pathogens. The filters contain ultrafiltration membranes that are highly effective at removing pathogens from the water, while the activated carbon fleeces eliminate unwanted tastes and smells. BWT bestcare filters provide guests and diners with a cool refreshment sensation that guarantees the highest standards of hygiene – consistently pure water of exceptional sensory quality and an impressive capacity.

APPLICATIONS: For water dispensers

Description	Dimensions HxWmm	Capacity (ltrs)	Part No
BWT BESTCARE S	385 x 88	12,000	BWT-CARE-S

WATER FILTERS



3M SCALEGARD™ BLEND SERIES



FEATURES

3M™ ScaleGard™ Blend Series reduces chlorine taste and odour, as well as chloramines that can react with metal, plastic and rubber materials which may cause equipment damage. Scale reduction also helps provide equipment protection from hard scale and corrosion. An innovative, powerful system that combines chloramine reduction water filtration systems with the ability to monitor filter capacity and control water quality at your fingertips. Quadruple-action filtration provides protection against: Hard scale, Corrosion, Chlorine taste/odour and Chloramines.

APPLICATIONS: For protecting catering and vending equipment

Description	Part No
BH3 VARIABLE BYPASS HEAD	3M-BH3HEAD
BH3 VARIABLE BYPASS HEAD WITH MONITOR	3M-BH3MHEAD

FOR COFFEE, HOT BEV & POSTMIX WITH VARIABLE BYPASS

Description	Capacity (ltrs)	Part No
3M SCALEGUARD BLEND 145 CLS CARTRIDGE	2006	3M-B145CLS
3M SCALEGUARD BLEND 165 CLS CARTRIDGE	2835	3M-B165CLS
3M SCALEGUARD BLEND 195 CLS CARTRIDGE	4727	3M-B195CLS

3M AP2 FILTER RANGE



FEATURES

3M's patented filtration technology utilises a powdered, engineered media, combined with a unique binding matrix supporting small particles, to deliver superior efficiency and optimal performance.

The 3M AP2-C401 SG is a dedicated water filter for drinking water and water coolers. It removes bad taste and odours including chlorine, benzene, toxaphene, dichlorobenzene, lead, cysts and reduces sediment. Approximate 4000 litre capacity – recommended cartridge change every 6 months.

APPLICATIONS: For steam ovens and combination steamers

Description	Part No
3M AP2 HEAD FOR AP2 CARTRIDGE	3M-AP2HEAD

Description	Capacity (ltrs)	Part No
3M AP2-C401G CARTRIDGE	4000	3M-AP2-C401G
3M AP2-C401SG CARTRIDGE FOR DRINKING WATER AND WATER COOLER APPLICATIONS	4000	3M-AP2-C401SG
3M 0.5 MICRON CARBON BLOCK REDUCES CHLORINE, TASTE & ODOUR	4000	3M-AP2-C405G
3M AP2-C405SG 0.5 MICRON REDUCES CHLORINE, TASTE & ODOUR AND SCALE INHIBITOR	4000	3M-AP2-C405 FILTER

Capacity based on water hardness of 12° clarke / 180 PPM



WATER FILTERS

3M HF-MS FILTER CARTRIDGE RANGE



FEATURES

The 3M HF-MS range provides scale inhibition for coffee machines and small vending machines as well as sediment and chlorine, taste and odour reduction.

The small sizes are ideal for space constraint issues. All products fit the VH3 head which allows interchangeability and no requirement for turning off the water supply when changing a cartridge.

APPLICATIONS: For steam ovens and combination steamers

Description	Part No
STANDARD VH3 HEAD WITH FEMALE 3/8 BSP	3M-VH3STANDARDHEAD
VH3 HEAD WITH 3/8" PUSH FIT CONNECTIONS	3M-VH3HEADJ/G3/8FIT

Description	Capacity (ltrs)	Part No
3M HF05MS CARTRIDGE	5600	3M-HF05MS
3M HF10MS CARTRIDGE	13000	3M-HF10MS

3M HF-S FILTER CARTRIDGE RANGE All sizes available, please contact sales.



FEATURES

The 3M HF-S range reduces sediment, bacteria and chlorine for clearer and great tasting ice. The built-in scale inhibitor reduces lime scale build-up on evaporator plates to help ensure long lasting equipment and reduce service calls. Sanitary Quick Change (SQC) encapsulated cartridge design allows for fast and easy cartridge change.

APPLICATIONS: For ice makers and flakers

Description	Capacity (ltrs)	Part No
3M HF40-S CARTRIDGE	94000	3M-HF40-S
3M HF60-S CARTRIDGE	132489	3M-HF60-S
3M HF90-S CARTRIDGE	200000	3M-HF90-S

3M SCALEGARD™ PRO RANGE



FEATURES

The 3M ScaleGard Pro range has been designed to protect coffee and beverage equipment from the harmful effects of scale build-up in hard water areas. The filter cartridge has been designed to prevent hard scale formation in the heating coils that will result in energy inefficiency, equipment downtime and expensive service call outs.

APPLICATIONS: For hot beverage equipment

Description	Capacity (ltrs)	Part No
3M SCALEGARD PRO 124 CARTRIDGE	1600	3M-SGP124BN
3M SCALEGARD PRO 165 CARTRIDGE	2300	3M-SGP165BN
3M SCALEGARD PRO 195 CARTRIDGE	3900	3M-SGP195BN

Capacity based on water hardness of 12° clarke / 180 PPM

WATER FILTERS

EVERPURE

EVERPURE INSURICE FILTER RANGE



FEATURES

The Everpure Insurice filtration system provides premium quality water for ice machines and flakers. It reduces chlorine taste, odours and other contaminants for clearer, brighter great tasting ice.

Proprietary Micro-Pure® II filtration media effectively inhibits the growth of bacteria on the filter. Sanitary cartridge replacement is simple, quick and clean. Internal filter parts are never exposed to handling or contamination.

The filter also reduces water related ice machine service problems caused by scale, dirt and other dissolved minerals.

APPLICATIONS: For ice makers and flakers

Description	Dimensions HxWxDmm	Capacity (ltrs)	Part No
EVERPURE INSURICE SINGLE FILTER FOR ICE MACHINE APPLICATIONS FOR ICE MACHINES USING UP TO 135KG DAILY	677 x 200 x 130	34000	EV932401

Description	Dimensions HxWxDmm	Capacity (ltrs)	Part No
EVERPURE INSURICE TWIN FILTER FOR ICE MACHINE APPLICATIONS FOR ICE MACHINES USING UP TO 280KG DAILY	640 x 420 x 139	68130	EV932402

EVERPURE MH2 FILTER CARTRIDGE



FEATURES

The Everpure MH2 provides premium quality water for coffee and hot beverage applications. Ensures clear, fresh water that produces great tasting coffee and other hot beverages. Scale inhibitor helps reduce scale build up on heating elements thus protecting the equipment and reducing service costs.

APPLICATIONS: For hot beverage equipment

Description	Dimensions HxDmm	Capacity (ltrs)	Part No
EVERPURE MH2 REPLACEMENT CARTRIDGE FILTER FOR HOT BEVERAGE APPLICATIONS UTILISING QL3B HEAD (NOT SUPPLIED)	369 x 83	34068	EV961326

Description	Part No
EVERPURE QL3B HEAD	EVP4312-13

Capacity based on water hardness of 12° clarke / 180 PPM

WATER FILTERS

EVERPURE

EVERPURE 4C FILTER CARTRIDGE



FEATURES

The Everpure 4C provides a 11,355 litre capacity and is specifically designed for cold cup vending applications and features precoat filtration to provide superior chlorine taste and odour reduction. Submicron filter technology filters dirt and particles as small as 0.5 microns in size as well as reducing contaminants such as Cryptosporidium and Giardia cysts.

APPLICATIONS: For cold cup vending applications

Description	Dimensions HxDmm	Capacity (ltrs)	Part No
EVERPURE 4C REPLACEMENT CARTRIDGE FILTER FOR COLD CUP VENDING APPLICATIONS UTILISING QL3B HEAD (NOT SUPPLIED)	369 x 83	11355	EV96011

Description	Part No
EVERPURE QL3B HEAD	EVP4312-13

EVERPURE 4H FILTER CARTRIDGE



FEATURES

The Everpure 4H provides a 11,355 litre capacity and is a scale inhibiting water filter specifically designed for hot cup vending applications and features precoat filtration to provide superior chlorine taste and odour reduction. Submicron filter technology filters dirt and particles as small as 0.5 microns in size as well as reducing contaminants such as Cryptosporidium and Giardia cysts.

APPLICATIONS: For hot beverage equipment

Description	Dimensions HxDmm	Capacity (ltrs)	Part No
EVERPURE 4H REPLACEMENT CARTRIDGE FILTER FOR HOT CUP VENDING APPLICATIONS UTILISING QL3B HEAD (NOT SUPPLIED)	369 x 83	11355	EV961100

Description	Part No
EVERPURE QL3B HEAD	EVP4312-13

Capacity based on water hardness of 12° Clarke / 180 PPM

WATER FILTERS

EVERPURE

EVERPURE MC2 FILTER CARTRIDGE



FEATURES

The Everpure MC² Filter Cartridge improves the taste of fountain beverages and helps retain the drinks carbonation. It can be used for both fountain beverage and combination applications. Micro-Pure II media with AglON™ antimicrobial protection inhibits any potential bacterial growth. Exclusive submicron precoat filtration removes particles as small as 1/2 micron in size, eliminating bad tastes and odours.

APPLICATIONS: For drinking water application

Description	Dimensions HxDmm	Capacity (ltrs)	Part No
EVERPURE MC2 REPLACEMENT CARTRIDGE FILTER FOR DRINKING WATER APPLICATIONS UTILISING QL3B HEAD (NOT SUPPLIED)	527 x 83	34068	EVP961255

Description	Part No
EVERPURE QL3B HEAD	EVP4312-13

EVERPURE CLARIS



FEATURES

Everpure Claris filter systems are designed specifically for tea and beverage equipment. The cartridges reduce scale as well as improving the taste and aroma of the final beverage. The Claris system uses ion exchange (saltless softening) technology to remove hardness and reduce alkalinity. The final water hardness can then be carefully tailored for optimal performance.

In addition the Claris XXL System is suitable for steam applications.

APPLICATIONS: For tea and beverage equipment

Description	Dimensions HxDmm	Capacity (ltrs)	Part No
CLARIS MEDIUM REPLACEMENT CARTRIDGE	426 x 94	3002	EVP4339-11
CLARIS LARGE REPLACEMENT CARTRIDGE	360 x 136	5016	EVP4339-12
CLARIS EXTRA LARGE REPLACEMENT CARTRIDGE	471 x 136	7192	EVP4339-13
CLARIS XXL REPLACEMENT CARTRIDGE	471 x 175	13200	EVP4339-14

Capacity based on water hardness of 12° clarke / 180 PPM

WATER FILTERS

EVERPURE

EVERPURE CLARIS ULTRA



FEATURES

The Everpure Claris Ultra range is the world's first filter cartridge which combines mineral reduction and corrosion protection through advanced pH balancing whilst providing the very best filtered water quality for hot drinks and ice machines whilst preventing scale formation. The Everpure Claris Ultra range of cartridges have the distinct advantage of inhibiting corrosion and metal migration within the widest range of water hardness levels.

APPLICATIONS: For use with coffee machines, ice makers and vending machines

Description	Dimensions HxDmm	Capacity (lirs)	Part No
CLARIS ULTRA 250 REPLACEMENT CARTRIDGE	315 x 94	2250	EVP4339-80
CLARIS ULTRA 500 REPLACEMENT CARTRIDGE	426 x 94	3750	EVP4339-81
CLARIS ULTRA 1000 REPLACEMENT CARTRIDGE	360 x 136	7000	EVP4339-82
CLARIS ULTRA 1500 REPLACEMENT CARTRIDGE	471 x 136	10000	EVP4339-83
CLARIS ULTRA 2000 REPLACEMENT CARTRIDGE	471 x 175	16500	EVP4339-84

Capacity based on water hardness of 12° clarke / 180 PPM



Description	Part No
CLARIS HEAD ONLY 3/8" BSP MALE	EVP4339-90
CLARIS WATER METER	EVP4339-30

COFFEE MACHINE PARTS AND ACCESSORIES

FLUID TRANSFER PARTS AND ACCESSORIES FOR
MAKING/SERVING COFFEE

VALVES / GRINDER BLADES / PRESSURE SWITCHES / ACCESSORIES



COFFEE MACHINE PARTS & ACCESSORIES



Description

ANTI-VACUUM VALVE STANDARD 1/4"

Part No

ANTIVACUUMVALVE1/4

This valve allows air to escape the boiler as the water heats up, hissing and then closing off when the boiler water reaches it's operating pressure, sealed by the steam pressure created.



Description

GICAR FLOW METER LID ONLY WITH LED

Part No

FLOWMETER-GICARLIDLED

GICAR flow meter lid only with LED, GICAR, Part number 9.0.16.50G



Description

GICAR PLASTIC PROPELLOR

Part No

FLOWMETER-GICARPROPELLOR

GICAR propeller, Part number 6.9.23.05G



Description

GRINDER BLADES SAN MARCO 64MM - 37MM RH

Part No

GRINDERBLADES-64MM

Pair of grinder blades / burrs for SAN MARCO grinder, 64mm – 37mm RH, 8.5mm thickness, 3 fixing holes



Description

GRINDER BLADES SAN MARCO 84MM - 45MM RH

Part No

GRINDERBLADES-84MM

Pair of grinder blades / burrs for SAN MARCO grinder, 84mm – 45mm RH, 9mm thickness, 3 fixing holes



Description

6.5MM HOLDER GASKET

Part No

HOLDERGASKET-6.5MM

Filter holder gasket, 64 x 52.5 x 5.5mm

COFFEE MACHINE PARTS & ACCESSORIES



Description

MACHINE FOOT 80 X 48MM

Aluminum and rubber machine extension stand, 80 x 48mm

Part No

MACHINEFOOT80X48MM



Description

SIRAI PRESSURE SWITCH 30AMP

Pressure switch P302/6, CE-SEV-ASE-UL Approved, Connection ISO228G 1/4" M for pipe diameter 4x6mm, Adjustable scale 0.5 – 1.4 Bar, Fixed Differential 0.15 (+/- 0.06) Bar, Fluid Max Temp 140°C, Max load contacts 220V 7Kw (30A), 400V 12Kw (30A)

Part No

PRESSURESWITCH-SIRAI30AMP



Description

3/8" BSP MALE CERTIFIED RELIEF VALVE BRAND NOSTRALI

Boiler valve diameter 3/8M, 1.8 Bar CE-PED, Calibration pressure 1.8 Bar, Steam outlet rate 6.3Kg/H

Part No

RELIEFVALVE-
38BSPM1.8BARNOSTRALI



Description

LUCIFER 3 WAY BODY, RUBY SEAL ORIFICE 1.5MM FLUID TEMPERATURE -30°C + 140°C

E131 F4304G, Lucifer solenoid body 3 way, Ruby seal orifice 1.5mm, Fluid temp -30°C – +140°C, Outlet diameter 1/8" Conical, Max 10 Bar

Part No

SOLENOID-LUCIFER3WAYBODY



Description

LUCIFER 3 WAY COMPLETE VALVE 240V 50HZ, COIL 9W

E131 F4304, Ruby seal orifice 1.5mm, Fluid temp -40°C – +140°C, Outlet diameter 1/8" Conical, Max 10 Bar, 240V 50Hz 9W coil

Part No

SOLENOID-
LUCIFER3WAYCOMPLETE



Description

LUCIFER/PARKER 230V 9W COIL WITH DIN PLUG

Width 32mm, Height 38mm, Length 43mm, 240V 50Hz 9W coil

Part No

SOLENOID-
LUCIFERCOIL230V9W

COFFEE MACHINE PARTS & ACCESSORIES



Description	Part No
ODE MINI VALVE 2 WAY 1/8" G, 230/240V 18BAR, 5WATT	SOLENOID-ODE21JN1ROV23
2 Way valve, Orifice diameter 2.3mm, Temp - 10°C - +140°C, 240V 5W	



Description	Part No
MILK JUG S/STEEL 0.6 LITRE	SSJUG-0.6LITRE
MILK JUG S/STEEL 1 LITRE	SSJUG-1LITRE
MILK JUG S/STEEL 1.5 LITRE	SSJUG-1.5LITRE
3OZ/85ML STAINLESS STEEL MILK JUG	SSJUG-3OZ

Range of Stainless steel milk jugs from stock, other sizes available, contact sales.



Description	Part No
S/STEEL SHAKER WITH MESH TOP-6OZ 95MM X 70MM	SSSHAKER-95MMX70MM

Stainless steel chocolate shaker with mesh lid



Description	Part No
ANALOGICAL THERMOMETER 25MM	THERMOMETER-ANALOGICAL25MM

Clip on analogue thermometer, Temp scale 0-100°C



Description	Part No
EXPANSION VALVE 14BAR 6MM PUSHFIT X 9MM BARB	VALVE-EXPANSION14BAR

14 Bar Expansion valve, Quick coupling, 6mm push fit x 9mm barb



Description	Part No
EXPANSION VALVE 4BAR 6MM STEM X 9MM BARB	VALVE-EXPANSION4BAR

4 Bar Expansion valve, Quick coupling, 6mm stem x 9mm barb

MISC

PLEASE CONTACT SALES IF YOU NEED SOMETHING
THAT IS NOT LISTED HERE

CABLE TIE / STAINLESS STEEL CLAMPS / OETIKER / MISC



MISC

CABLE TIE



Description	Part No
BLACK NYLON CABLE TIE.100MM X 2.5MM	CABLETIE-002
BLACK NYLON CABLE TIE. 250MM X 4.8MM	CABLETIE-003
BLACK CABLE TIES 370MM X 7.6MM	CABLETIE-005
BLACK CABLE TIE 200MM X 4.8MM	CABLETIE-006
BLACK CABLE TIE 203MM LONG X 7.6MM WIDE	CABLETIE-007
BLACK CABLE TIE 300MM LONG X 4.8MM WIDE	CABLETIE-008
BLACK CABLE TIE CRADLE, TAKES UP TO 9MM WIDE TIES	CABLETIEBASE-9MMLBLACK

S/STEEL CLAMPS - Alternative brand to OETIKER, made in Brazil. OTHER SIZES AVAILABLE.



Description	Part No
S/STEEL CLAMP 10.5	CLAMP118-10.5
S/STEEL CLAMP 14.5	CLAMP118-14.5
S/STEEL CLAMP 17.0	CLAMP118-17.0
S/STEEL CLAMP 19.8	CLAMP118-19.8

OETIKER OTHER SIZES AVAILABLE.



Description	Part No
OETIKER CLAMPS 8.8MM-10.5MM 1 EAR STEPLESS	OET10.5-505R
OETIKER CLAMPS 9.6MM-11.3MM 1 EAR STEPLESS	OET11.3-505R
OETIKER CLAMPS 12.00MM - 14.0MM 1 EAR STEPLESS	OET14.0-706R
OETIKER CLAMPS 12.00MM - 14.5MM 1 EAR STEPLESS	OET14.5-706R
OETIKER CLAMPS 14.5MM - 17.00MM 1 EAR STEPLESS	OET17.0-706R



Description	Part No
OET PLIERS SIDE JAW	OET-PLIERS

MISC

MISC



Description

PTFE TAPE 12MM X 12M X 0.075MM

Part No

PTFE TAPE



Description

WRAS APPROVED FERNOX EXTERNAL LEAK SEALER AND JOINTING COMPOUND

Part No

LEAKSEALER-LS-X



Description

FOOD SAFE PURE SILICONE GREASE USED FOR PROTECTION, SEALING AND LUBRICATION FOR ALL METAL, PLASTIC AND RUBBER COMPONENTS.

Part No

SILICONEGREASE



Description

AMBERSIL SILICONE SPRAY 500ML

Part No

SILSPRAY-AMBERSIL



Description

15MM COPPER TUBE CUT TO 5CMS

Part No

WOL508200-2INCH

15MM COPPER TUBE 10CM PIECE

WOL508200-4INCH



Description

DN15 WRAS APPROVED, COLD WATER, MULTIJET, BRASS BODY WATER METER

Part No

METER-CW-001



Description

LABEL & ADHESIVE REMOVER, FOOD GRADE 200ML

Part No

LABEL REMOVER

Suitable for use in the food and beverage industry the Label & Adhesive Remover from Ambersil is designed for the removal of packaging and transport labels from shipping containers, plastic boxes, and bulk storage (intermediate) drums. Its effective blend of solvent and citrus actively penetrates the paper layer to breakdown the adhesive minimising the requirement for scraping.
Warning: Flammable – contains solvents

MISC

MISC



Description

AMBERSIL LABEL AND ADHESIVE REMOVER,
NON-FOOD GRADE, 200ML.

Part No

LABELREMOVER-NONFOODGRADE



Description

ANTI-STATIC FOAMING CLEANER 400ML

Part No

ANTI-STATIC CLEANER

An anti-static cleaner that can be used to remove general grime and soiling on both hard and soft surfaces. Ideal for use as a post-maintenance cleaner its formula removes light oils, finger marks and grime whilst inhibiting dust build up thanks to its anti-static properties.



Description

AMBERSIL WATER BASED LEAK DETECTOR, 400ML

Part No

LEAKDETECTORSPRAY

KITTING AND VALUE ADDED SERVICES

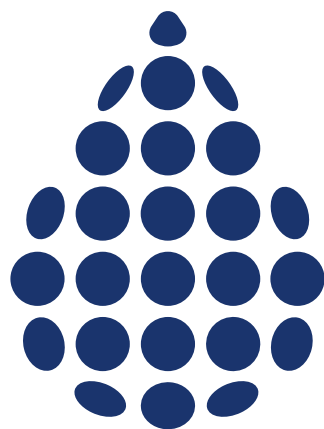
AS A WELL-ESTABLISHED UK MANUFACTURER (OVER 35 YEARS) OF CALCIUM TREATMENT UNITS (CTU'S), WATER SOFTENERS AND WATER FILTERS, OVER THE LAST 2 YEARS WE HAVE EXPANDED OUR FACILITIES TO INCLUDE PARTS SALES/DISTRIBUTION AND KITTING/BUILD SERVICES.

UTILISING OUR ENGINEERING EXPERTISE, WE ARE ABLE TO BUILD PRODUCTS TO MEET MOST LIQUID DISPENSE APPLICATIONS. IF YOU HAVE A REQUIREMENT, PLEASE CONTACT US.

WE OFFER A FULL KITTING SERVICE FROM INDIVIDUALLY BAGGED SERVICE KITS, OR MORE COMPLEX FITTINGS/TUBING/VALVE ASSEMBLIES. NOTHING IS BEYOND OUR CAPABILITIES.

FOR MORE INFORMATION OR TO DISCUSS YOUR REQUIREMENTS PLEASE CONTACT OUR SALES TEAM ON: 01279 742059





01279 780 250 | info@watercare.co.uk

WaterCare | Regal House | South Road | Harlow | CM20 2BL. | [@europeanwtrcare](https://twitter.com/europeanwtrcare) | www.watercare.co.uk