



COSTS | CONTROL | VISIBILITY

WiFi Water Meter

Connected Water Filter Management

Connected Water Filter Management

Realtime Data Management for your Business

Connect | View | Manage | Save



Connect

Connect all your water filters to the cloud via WiFi



View

Get realtime data on the status of every water filter via web, android and IOS devices



Manage

Manage your entire estate of water filters and keep your business operating efficiently.



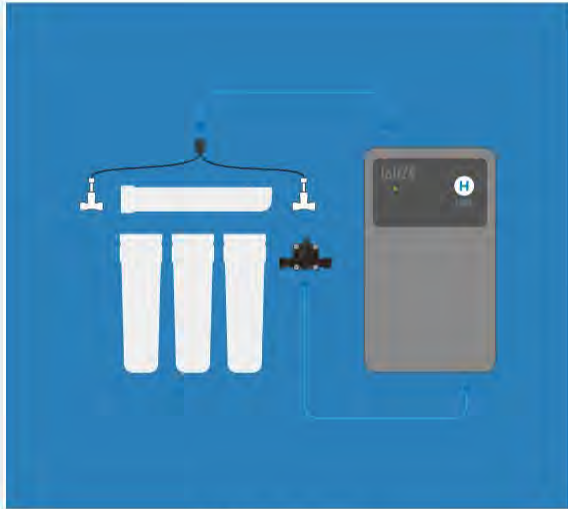
Save

Save money by exchanging filters on-time, every time and eliminate machine faults through scale build-up

Connected Water Filter Management

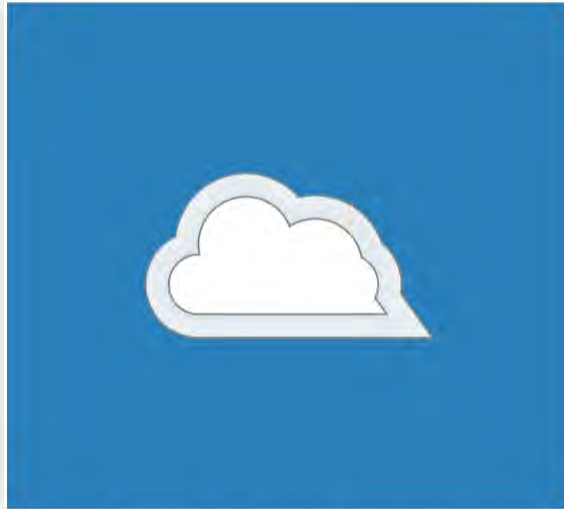
All-in-One Connected Water Treatment Management

Smart Monitoring of Water Filter Usage, Water Quality and Exchange Frequency



Hardware

Used, expired water filters returned to us to be entered into recycling process



Securely stored in Cloud

Connected to your server or available in our secure, cloud based servers



Service Dashboard

Water Filter Location & Status available on web, Android and IOS

Connected Water Filter Management

What you get

Hardware | Support | Customisation



Hardware

BLE-WLAN Transmitter IoTIZR & Sensor



Service

Dashboard and Support available through web app and mobile app's for both Android and IOS

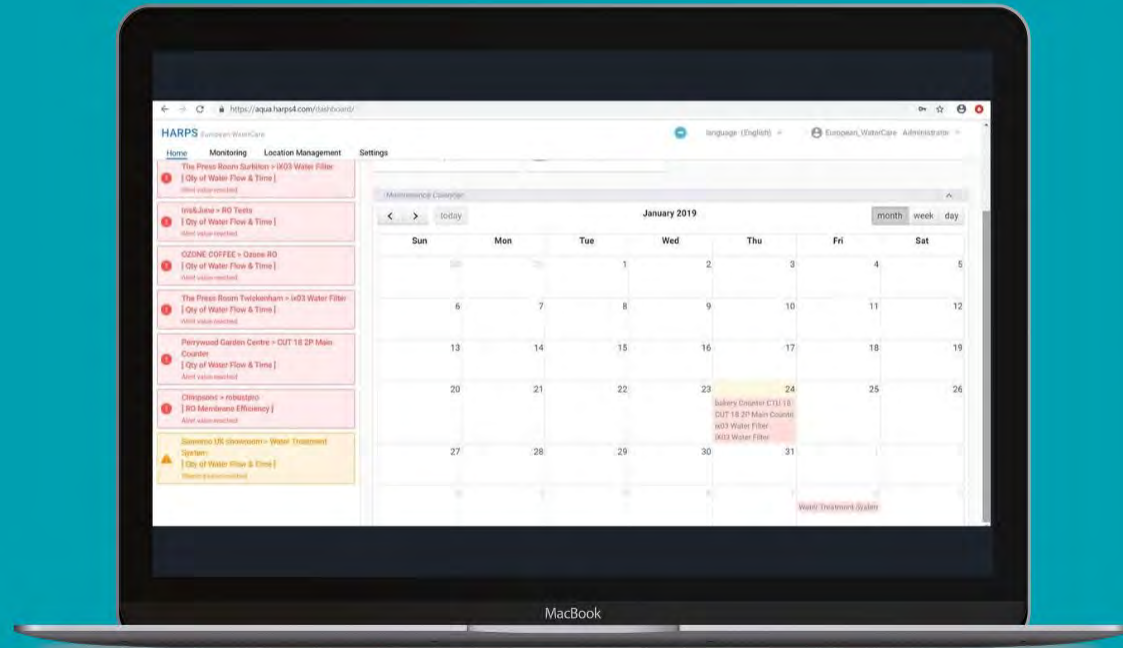


Customisation

Change the look and feel
Connect to your specific system

Web App Dashboard

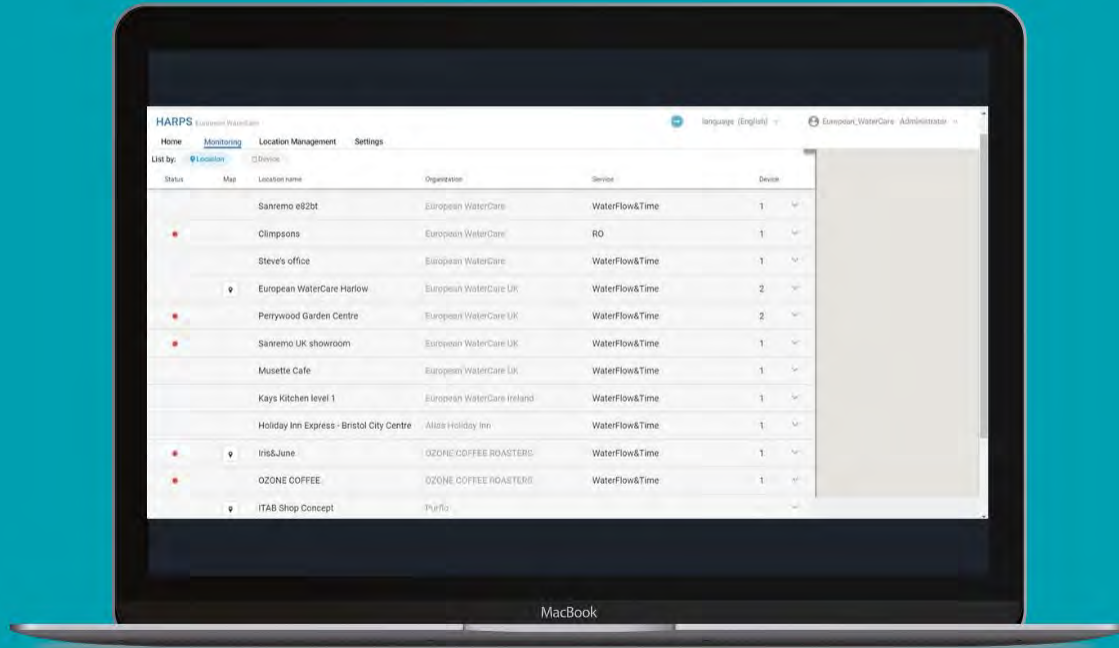
Calendar & Notifications - Keep your equipment treated & reduce unnecessary call outs and costs



- Notification Alert List of Upcoming Replacements - Never unknowingly expose your equipment to hard water
- Calendar view of Scheduled Visits/ Jobs - Accurately Plan your Service Calls for more efficient scheduling to reduce cost/ time/ visits

Web App Dashboard

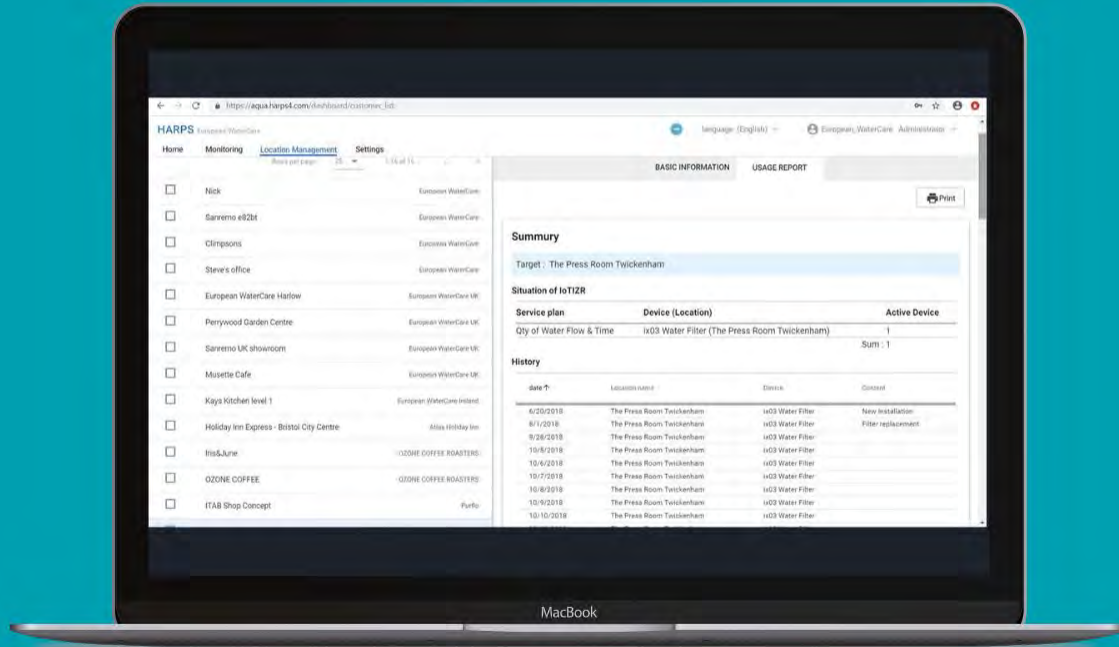
Monitoring - Clear | Simple | Manageable



- Filter Status - Simple Traffic Light System
- Map/ Location
- Location Name
- Client/ Group Name
- Service Type
- Number of Devices Connected

Web App Dashboard

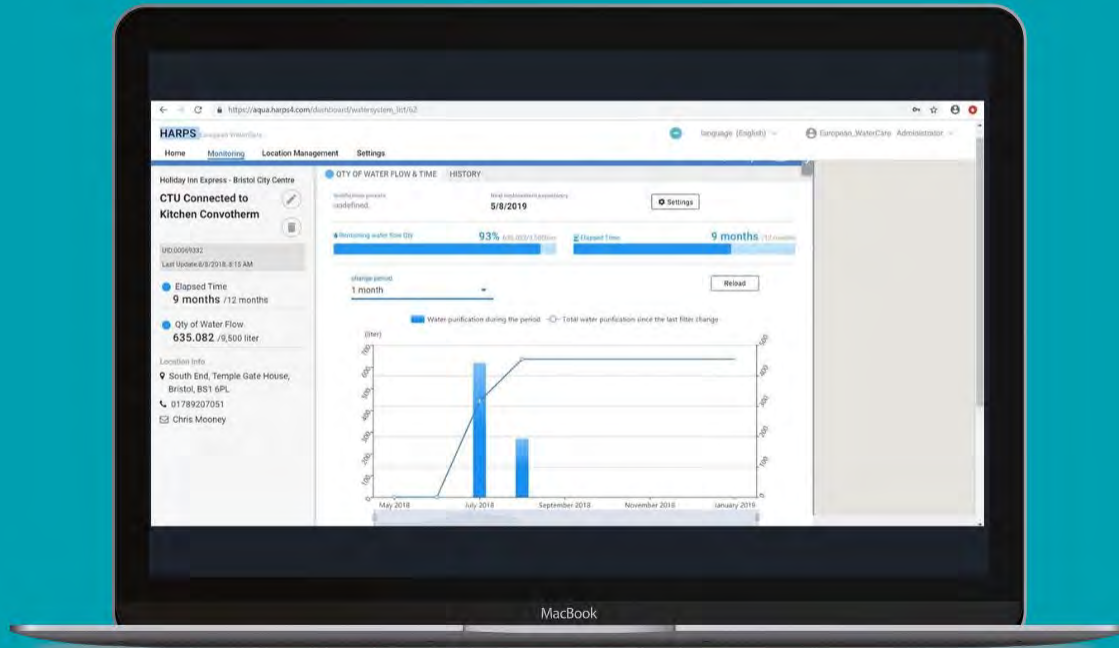
Location Management - Summary | Usage Report | Service History



- Usage Report - Plan for Subsequent Replacements
- Service Plan - Easily Identify Type of Filtration and Agreed Service Plan
- Product Detail
- Location
- Service History

Web App Dashboard

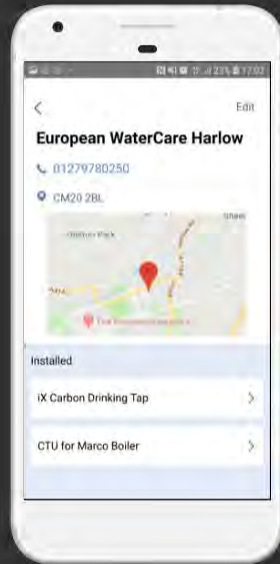
Detailed Monitoring & Management - Water Usage | Time | Filter Capacity



- Product & Location Info - Easily Identify Product & Equipment Location within a Large Site
- Serial/ Asset Number
- Remaining Capacity - Monitor Usage to keep equipment protected
- Monitor Usage Trends by Date Period - Week/ Month/ Year
- Accurately Plan for next Exchange to Control Costs

Mobile App

Keep in touch and control wherever your are via our mobile app



- Site/ Client Account Name
- Contact Details & Postcode
- Google Map Location
- Installed Filters Listed

Available on IOS and Android

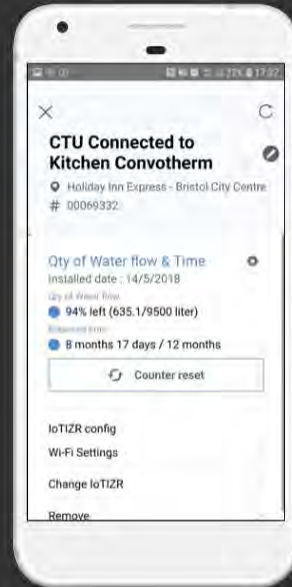
Mobile App

Installation Date ●

Water Flow & % of Capacity Remaining ●

Elapsed Time since Installation ●

Counter Reset ●



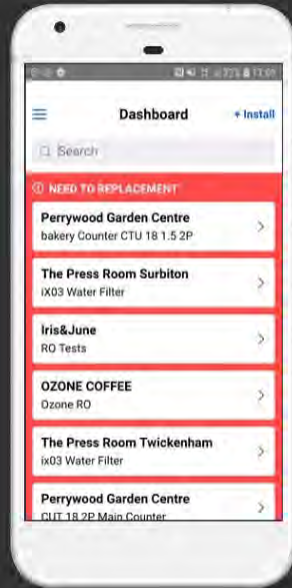
● Product & Equipment Information

● Site Address

● Asset/ Serial Number

Available on IOS and Android

Mobile App



- Notification of Upcoming Exchange
- Listed view of Replacements needed across connected estate

Available on IOS and Android



Saving visits and extending life of filter to near maximum usage will increase your profitability.

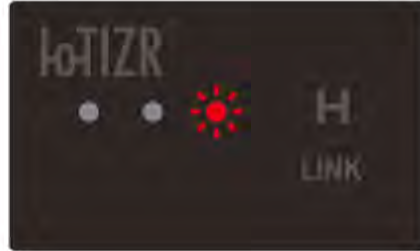
Connectivity Status

IoTIZR has LED indicators to show the connectivity status



Light is Off

No Power/ Unplugged



Blinking Red

No Setup/ Lost Connection



Blinking Green

Setup Mode



Solid Green

Connected to network

IOTIZR

Specifications

I/F	Port: One water flow sensor Port and 3 extension sensor ports. 3 x LED's. 1 x Button
Power Supply	Micro USB B 500mA or above
Size	L 85mm W 50mm H 15mm
Weight	45g
Operating Temperature	-20 C to 75 C
Relative Humidity	<90%
Water Resist	No
Fireproof Level	UL94V-0